

# **Source Water Protection Plan**

## **Municipal Water Works of Pineville**

PWSID WV3305517

Wyoming County

April 2016

Prepared by:

Tetra Tech, Inc.

803 Quarrier Street, Suite 400

Charleston, WV 25314

In cooperation with the Municipal Water Works of Pineville



This page is intentionally blank.

John Beckman

Preparer's Name

Source Water Specialist

Title of Preparer

Tetra Tech, Inc.

Name of Contractor(s)/Consultant(s)

I certify the information in the source water protection plan is complete and accurate to the best of my knowledge.

Timmy J. Ellison

Signature of responsible party or designee authorized to sign for water utility:

Timmy J. ELLISON

Print Name of Authorizing Signatory (see instructions):

MAYOR

Title of Authorizing Signatory:

APRIL 19, 2016

Date of Submission (mm/dd/yyyy):

This page is intentionally blank.



## TABLE OF CONTENTS

---

<b>1.0 PURPOSE.....</b>	<b>1</b>
1.1 What are the benefits of preparing a Source Water Protection Plan? .....	1
<b>2.0 BACKGROUND: WV SOURCE WATER ASSESSMENT AND PROTECTION PROGRAM.....</b>	<b>2</b>
<b>3.0 STATE REGULATORY REQUIREMENTS .....</b>	<b>3</b>
<b>4.0 SYSTEM INFORMATION .....</b>	<b>4</b>
<b>5.0 WATER TREATMENT AND STORAGE .....</b>	<b>5</b>
<b>6.0 DELINEATIONS.....</b>	<b>7</b>
<b>7.0 PROTECTION TEAM.....</b>	<b>9</b>
<b>8.0 POTENTIAL SOURCES OF SIGNIFICANT CONTAMINATION .....</b>	<b>11</b>
8.1 Confidentiality of PSSCs.....	11
8.2 Local and Regional PSSCs .....	11
8.3 Prioritization of Threats and Management Strategies .....	13
<b>9.0 IMPLEMENTATION PLAN FOR MANAGEMENT STRATEGIES .....</b>	<b>14</b>
<b>10.0 EDUCATION AND OUTREACH STRATEGIES.....</b>	<b>21</b>
<b>11.0 CONTINGENCY PLAN .....</b>	<b>25</b>
11.1 Response Networks and Communication .....	25
11.2 Operation During Loss of Power.....	26
11.3 Future Water Supply Needs .....	27
11.4 Water Loss Calculation.....	27
11.5 Early Warning Monitoring System .....	29
<b>12.0 SINGLE SOURCE FEASIBILITY STUDY .....</b>	<b>31</b>
<b>13.0 COMMUNICATION PLAN .....</b>	<b>32</b>
<b>14.0 EMERGENCY RESPONSE .....</b>	<b>33</b>
<b>15.0 CONCLUSION .....</b>	<b>34</b>

## LIST OF TABLES

---

Table 1. Population Served by Municipal Water Works of Pineville .....	4
Table 2. Municipal Water Works of Pineville Water Treatment Information .....	5
Table 3. Municipal Water Works of Pineville Surface Water Sources .....	6
Table 4. Municipal Water Works of Pineville Groundwater Sources.....	6
Table 5. Watershed Delineation Information.....	8
Table 6. Protection Team Member and Contact Information .....	10
Table 7. Locally Identified Potential Sources of Significant Contamination .....	12
Table 8. Priority PSSCs or Critical Areas.....	15
Table 9. Priority PSSC Management Strategies.....	17
Table 10. Education and Outreach Implementation Plan .....	22
Table 11. Municipal Water Works of Pineville Water Shortage Response Capability .....	25
Table 12. Generator Capacity .....	26
Table 13. Future Water Supply Needs for Municipal Water Works of Pineville .....	27
Table 14. Water Loss Information .....	28
Table 15. Early Warning Monitoring System Capabilities .....	29

## APPENDICES

---

- Appendix A. Figures
- Appendix B. Early Warning Monitoring System Forms
- Appendix C. Communication Plan Template
- Appendix D. Single Source Feasibility Study
- Appendix E. Supporting Documentation

## SOURCE WATER PROGRAM ACRONYMS

---

<b>AST</b>	Aboveground Storage Tank
<b>BMP</b>	Best Management Practices
<b>ERP</b>	Emergency Response Plan
<b>GWUDI</b>	Ground Water Under the Direct Influence of Surface Water
<b>LEPC</b>	Local Emergency Planning Committee
<b>OEHS/EED</b>	Office of Environmental Health Services/Environmental Engineering Division
<b>PE</b>	Professional Engineer
<b>PSSCs</b>	Potential Source of Significant Contamination
<b>PWSU</b>	Public Water System Utility
<b>RAIN</b>	River Alert Information Network
<b>RPDC</b>	Regional Planning and Development Council
<b>SDWA</b>	Safe Drinking Water Act
<b>SWAP</b>	Source Water Assessment and Protection
<b>SWAPP</b>	Source Water Assessment and Protection Program
<b>SWP</b>	Source Water Protection
<b>SWPP</b>	Source Water Protection Plan
<b>WARN</b>	Water/Wastewater Agency Response Network
<b>WHPA</b>	Wellhead Protection Area
<b>WHPP</b>	Wellhead Protection Program
<b>WSDA</b>	Watershed Delineation Area
<b>WVBPH</b>	West Virginia Bureau for Public Health
<b>WVDEP</b>	West Virginia Department of Environmental Protection
<b>WVDHHR</b>	West Virginia Department of Health and Human Resources
<b>WVDHSEM</b>	West Virginia Division of Homeland Security and Emergency Management
<b>ZCC</b>	Zone of Critical Concern
<b>ZPC</b>	Zone of Peripheral Concern

## 1.0 PURPOSE

The goal of the West Virginia Bureau of Public Health (WVBPH) source water assessment and protection (SWAP) program is to prevent degradation of source waters which may preclude present and future uses of drinking water supplies to provide safe water in sufficient quantity to users. The most efficient way to accomplish this goal is to encourage and oversee source water protection on a local level. Many aspects of source water protection may be best addressed by engaging local stakeholders.

The intent of this document is to describe what Municipal Water Works of Pineville has done, is currently doing, and plans to do to protect its source of drinking water. Although this water system treats the water to meet federal and state drinking water standards, conventional treatment does not fully eradicate all potential contaminants and treatment that goes beyond conventional methods is often very expensive. By completing this plan, Municipal Water Works of Pineville acknowledges that implementing measures to minimize and mitigate contamination can be a relatively economical way to help ensure the safety of the drinking water.

### 1.1 WHAT ARE THE BENEFITS OF PREPARING A SOURCE WATER PROTECTION PLAN?

- Fulfilling the requirement for the public water utilities to complete or update their source water protection plan.
- Identifying and prioritizing potential threats to the source of drinking water; and establishing strategies to minimize the threats.
- Planning for emergency response to incidents that compromise the water supply by contamination or depletion, including how the public, state, and local agencies will be informed.
- Planning for future expansion and development, including establishing secondary sources of water.
- Ensuring conditions to provide the safest and highest quality drinking water to customers at the lowest possible cost.
- Providing more opportunities for funding to improve infrastructure, purchase land in the protection area, and other improvements to the intake or source water protection areas.

## 2.0 BACKGROUND: WV SOURCE WATER ASSESSMENT AND PROTECTION PROGRAM

Since 1974, the federal Safe Drinking Water Act (SDWA) has set minimum standards on the construction, operation, and quality of water provided by public water systems. In 1986, Congress amended the SDWA. A portion of those amendments were designed to protect the source water contribution areas around ground water supply wells. This program eventually became known as the Wellhead Protection Program (WHPP). The purpose of the WHPP is to prevent pollution of the source water supplying the wells.

The Safe Drinking Water Act Amendments of 1996 expanded the concept of wellhead protection to include surface water sources under the umbrella term of Source Water Protection. The amendments encourage states to establish SWAP programs to protect all public drinking water supplies. As part of this initiative states must explain how protection areas for each public water system will be delineated, how potential contaminant sources will be inventoried, and how susceptibility ratings will be established.

In 1999, the WVBPH published the West Virginia Source Water Assessment and Protection Program, which was endorsed by the United States Environmental Protection Agency. Over the next few years, WVBPH staff completed an assessment (i.e., delineation, inventory and susceptibility analysis) for all of West Virginia's public water systems. Each public water system was sent a copy of its assessment report. Information regarding assessment reports for Municipal Water Works of Pineville can be found in **Table 1**.

### 3.0 STATE REGULATORY REQUIREMENTS

On June 6, 2014, §16 1 2 and §16 1 9a of the Code of West Virginia, 1931, was reenacted and amended by adding three new sections, designated §16 1 9c, §16 1 9d and §16-1-9e. The changes to the code outlines specific requirements for public water utilities that draw water from a surface water source or a surface water influenced groundwater source.

Under the amended and new codes each existing public water utility using surface water or ground water influenced by surface water as a source must have completed or updated a source water protection plan by July 1, 2016, and must continue to update their plan every three years. Existing source water protection plans have been developed for many public water utilities in the past. If available, these plans were reviewed and considered in the development of this updated plan. Any new water system established after July 1, 2016 must submit a source water protection plan before they start to operate. A new plan is also required when there is a significant change in the potential sources of significant contamination (PSSC) within the zone of critical concern (ZCC).

The code also requires that public water utilities include details regarding PSSCs, protection measures, system capacities, contingency plans, and communication plans. Before a plan can be approved, the local health department and public will be invited to contribute information for consideration. In some instances, public water utilities may be asked to conduct independent studies of the source water protection area and specific threats to gain additional information.

## 4.0 SYSTEM INFORMATION

Municipal Water Works of Pineville is classified as a state regulated public utility and operates a community public water system. A community public water system is a system that regularly supplies drinking water from its own sources to at least 15 service connections used by year round residents of the area or regularly serves 25 or more people throughout the entire year. For purposes of this source water protection plan, community public water systems are also referred to as public water utilities. Information on the population served by this utility is presented in **Table 1** below.

**Table 1. Population Served by Municipal Water Works of Pineville**

<b>Administrative office location:</b>		296 Appalachian Highway, Pineville, WV 24874	
<b>Is the system a public utility, according to the Public Service Commission rule?</b>		Yes	
<b>Date of Most Recent Source Water Assessment Report:</b>		June 2009	
<b>Date of Most Recent Source Water Protection Plan:</b>		July 2011	
<b>Population served directly:</b>		Residential      987 Commercial      156 Public Authorities 23 <b>Total            1,166</b>	
<b>Bulk Water Purchaser Systems:</b>	<b>System Name</b>	<b>PWSID Number</b>	<b>Population</b>
	N/A		
<b>Total Population Served by the Utility:</b>		2,845	
<b>Does the utility have multiple source water protection areas (SWPAs)?</b>		Yes	
<b>How many SWPAs does the utility have?</b>		2	

## 5.0 WATER TREATMENT AND STORAGE

As required, Municipal Water Works of Pineville has assessed their system (e.g., treatment capacity, storage capacity, unaccounted for water, contingency plans) to evaluate their ability to provide drinking water and protect public health. **Table 2** contains information on the water treatment methods and capacity of the utility. Information about the surface sources from which Municipal Water Works of Pineville draws water can be found in **Table 3**. If the utility draws water from any groundwater sources to blend with the surface water the information about these ground water sources can be found in **Table 4**.

**Table 2. Municipal Water Works of Pineville Water Treatment Information**

<b>Water Treatment Processes (List All Processes in Order)</b>	Raw Water Intake, Settling Basin, Filters, Post Chlorination, Clear Well, High Service Pumps
<b>Current Treatment Capacity (gal/day)</b>	1,000,000
<b>Current Average Production (gal/day)</b>	454,000
<b>Maximum Quantity Treated and Produced (gal)</b>	652,000
<b>Minimum Quantity Treated and Produced (gal)</b>	318,000
<b>Average Hours of Operation</b>	12
<b>Maximum Hours of Operation in One Day</b>	24
<b>Minimum Hours of Operation in One Day</b>	8
<b>Number of Storage Tanks Maintained</b>	6
<b>Total Gallons of Treated Water Storage (gal)</b>	1,200,000
<b>Total Gallons of Raw Water Storage (gal)</b>	0



**Table 3. Municipal Water Works of Pineville Surface Water Sources**

Intake Name	SDWIS #	Local Name	Describe Intake	Name of Water Source	Date Constructed / Modified	Frequency of Use (Primary/ Backup/ Emergency)	Activity Status (Active/ Inactive)
Guyandotte River		Guyandotte River	Screened Pipe	Guyandotte River	1960s	Primary	Active
Pinnacle Creek		Pinnacle Creek	Screened Pipe	Pinnacle Creek	1990s	Backup	Active

**Table 4. Municipal Water Works of Pineville Groundwater Sources**

Does the utility blend with groundwater?					No				
Well/Spring Name	SDWIS #	Local Name	Date Constructed/ Modified	Completion Report Available (Yes/No)	Well Depth (ft)	Casing Depth (ft)	Grout (Yes/No)	Frequency of Use (Primary/ Backup/ Emergency)	Activity Status (Active/ Inactive)
N/A									

## 6.0 DELINEATIONS

For surface water systems, delineation is the process used to identify and map the drainage basin that supplies water to a surface water intake. This area is generally referred to as the source water protection area (SWPA). All surface waters are susceptible to contamination because they are exposed at the surface and lack a protective barrier from contamination. Accidental spills, releases, sudden precipitation events that result in overland runoff, or storm sewer discharges can allow pollutants to readily enter the source water and potentially contaminate the drinking water at the intake. The SWPA for surface water is distinguished as a Watershed Delineation Area (WSDA) for planning purposes; and the Zone of Peripheral Concern (ZPC) and Zone of Critical Concern (ZCC) are defined for regulatory purposes.

The WSDA includes the entire watershed area upstream of the intake to the boundary of the State of West Virginia border, or a topographic boundary. The ZCC for a public surface water supply is a corridor along streams within the watershed that warrants more detailed scrutiny due to its proximity to the surface water intake and the intake's susceptibility to potential contaminants within that corridor. The ZCC is determined using a mathematical model that accounts for stream flows, gradient and area topography. The length of the ZCC is based on a five-hour time-of-travel of water in the streams to the water intake, plus an additional one-quarter mile below the water intake. The width of the zone of critical concern is one thousand feet measured horizontally from each bank of the principal stream and five hundred feet measured horizontally from each bank of the tributaries draining into the principal stream. Ohio River ZCC delineations are based on ORSANCO guidance and extend 25 miles above the intake and one-quarter mile below the intake. The Ohio River ZCC delineations include 1,320 feet (one-quarter mile) measured from the bank of the main stem of the Ohio River and 500 feet on tributary.

The ZPC for a public surface water supply source and for a public surface water influenced groundwater supply source is a corridor along streams within a watershed that warrants scrutiny due to its proximity to the surface water intake and the intake's susceptibility to potential contaminants within that corridor. The ZPC is determined using a mathematical model that accounts for stream flows, gradient and area topography. The length of the zone of peripheral concern is based on an additional five-hour time-of-travel of water in the streams beyond the perimeter of the zone of critical concern, which creates a protection zone of ten hours above the water intake. The width of the zone of peripheral concern is one thousand feet measured horizontally from each bank of the principal stream and five hundred feet measured horizontally from each bank of the tributaries draining into the principal stream.

For groundwater supplies there are two types of SWPA delineations: 1) wellhead delineations and 2) conjunctive delineations, which are developed for supplies identified as groundwater under the direct influence of surface water, or GWUDIs. A wellhead protection area is determined to be the area contributing to the recharge of the groundwater source (well or spring), within a five year time of travel. A conjunctive delineation combines a wellhead protection area for the hydrogeologic recharge and a connected surface area contributing to the wellhead.

Information and maps of the WSDA, ZCC, ZPC and Wellhead Protection Area for this public water supply were provided to the utility and are attached to this report. See **Appendix A. Figures**. Other information about the WSDA is shown in **Table 5**.

**Table 5. Watershed Delineation Information**

<b>Size of WSDA (Indicate units)</b>	203.1 square miles
<b>River Watershed Name (8-digit HUC)</b>	Upper Guyandotte - 05070101
<b>Size of Zone of Critical Concern (Acres)</b>	6,885 acres
<b>Size of Zone of Peripheral Concern (Acres) (Include ZCC area)</b>	43,281 acres
<b>Method of Delineation for Groundwater Sources</b>	N/A
<b>Area of Wellhead Protection Area (Acres)</b>	N/A

## 7.0 PROTECTION TEAM

One important step in preparing a source water protection plan is to organize a source water protection team who will help develop and implement the plan. The legislative rule requires that water utilities make every effort to inform and engage the public, local government, local emergency planners, the local health department and affected residents at all levels of the development of the protection plan. WVBPH recommends that the water utility invite representatives from these organizations to join the protection team, which will ensure that they are given an opportunity to contribute in all aspects of source water protection plan development. Public water utilities should document their efforts to engage representatives and provide an explanation if any local stakeholder is unable to participate. In addition, other local stakeholders may be invited to participate on the team or contribute information to be considered. These individuals may be emergency response personnel, local decision makers, business and industry representatives, land owners (of land in the protection area), and additional concerned citizens.

The administrative contact for Pineville is responsible for assembling the protection team and ensuring that members are provided the opportunity to contribute to the development of the plan. The acting members of the Protection Team are listed in **Table 6**.

The role of the protection team members will be to contribute information to the development of the source water protection plan, review draft plans and make recommendations to ensure accuracy and completeness, and when possible contribute to implementation and maintenance of the protection plan. The protection team members are chosen as trusted representatives of the community served by the water utility and may be designated to access confidential data that contains details about the local PSSCs. The input of the protection team will be carefully considered by the water utility when making final decisions relative to the documentation and implementation of the source water protection plan.

Pineville will be responsible for updating the source water protection plan and rely upon input from the protection team and the public to better inform their decisions. To find out how you can become involved as a participant or contributor, visit the utility website or call the utility phone number, which are provided in **Table 6**.

**Table 6. Protection Team Member and Contact Information**

<b>Name</b>	<b>Representing</b>	<b>Title</b>	<b>Phone Number</b>	<b>Email</b>
Corbet Justus	Municipal Water Works of Pineville	Chief Operator	304-732-6251	
Darren Justus	Municipal Water Works of Pineville	Operator	304-732-6251	
Tim Ellison	Town of Pineville	Mayor	304-732-6255	townofpineville@outlook.com
Mike Goode	Pineville Volunteer Fire Department	Assistant Chief	304-732-8000	
Dean Meadows	Wyoming County Emergency Management	Director	304-732-6953	
Fred Cox	Wyoming County Health Department	Representative	304-732-7941	
Roger Snow	Pineville Police Department	Police Chief	304-732-6255	
Mike Johnson	Wyoming County Sheriff's Department	Deputy Sheriff	304-732-8000	
<b>Date of first protection Team Meeting</b>		March 29, 2016		
<b>Efforts made to inform and engage local stakeholders (public, local government, local emergency planners, local health department, and affected residents) and explain absence of recommended stakeholders:</b>		Public meeting held April 19, 2016. Meeting minutes are attached in Appendix E.		

## 8.0 POTENTIAL SOURCES OF SIGNIFICANT CONTAMINATION

Source water protection plans should provide a complete and comprehensive list of the PSSCs contained within the ZCC based upon information obtained from the WVBPH, working in cooperation with the West Virginia Department of Environmental Protection (WVDEP) and the West Virginia Division of Homeland Security and Emergency Management (WVDHSEM). A facility or activity is listed as a PSSC if it has the potential to release a contaminant that could potentially impact a nearby public water supply, and it does not necessarily indicate that any release has occurred.

The list of PSSCs located in the SWPA is organized into two types: 1) SWAP PSSCs, and 2) Regulated Data. SWAP PSSCs are those that have been collected and verified by the WVBPH SWAP program during previous field investigations to form the source water assessment reports and source water protection plans. Regulated PSSCs are derived from federal and state regulated databases, and may include data from WVDEP, US Environmental Protection Agency, WVDHSEM, and out-of-state data sources.

### 8.1 CONFIDENTIALITY OF PSSCS

A list of the PSSCs contained within the ZCC should be included in the source water protection plan. However, the exact location, characteristics and approximate quantities of contaminants shall only be made known to one or more designees of the public water utility and maintained in a confidential manner. In the event of a chemical spill, release or other related emergency, information pertaining to the contaminant shall be immediately disseminated to any emergency responders reporting to the site. The designees for the Municipal Water Works of Pineville are identified in the communication planning section of the source water protection plan.

PSSC data from some agencies (ex. WVDHSEM, WVDEP, etc.) may be restricted due to the sensitive nature of the data. Locational data will be provided to the public water utility. However, to obtain specific details regarding contaminants, (such as information included in Tier II reports), water utilities should contact the local emergency planning commission (LEPC) or agencies, directly. While the maps and lists of the PSSCs and regulated sites are to be maintained in a confidential manner, these data are provided in **Appendix A. Figures** for internal review and planning uses only.

### 8.2 LOCAL AND REGIONAL PSSCS

For the purposes of this source water protection plan, local PSSCs are those that are identified by the water utility and local stakeholders and are not already identified in the PSSCs lists distributed by the WVBPH and other agencies. Local stakeholders may identify local PSSCs for two main reasons. The first is that it is possible that threats exist from unregulated sources and land uses that have not already been inventoried and do not appear in regulated databases. For this reason each public water utility should investigate their protection area for local PSSCs. A PSSC inventory should identify all contaminant sources and land uses in the delineated ZCC. The second reason local PSSCs are identified is because public water utilities may consider expanding the PSSC inventory effort outside of the ZCC into the ZPC and WSDA if necessary to properly identify all threats that could impact the drinking water source. As the utility considers threats in the watershed they may consider collaborating with upstream communities to identify and manage regional PSSCs.

When conducting local and regional PSSC inventories, utilities should consider that some sources may be obvious like above ground storage tanks, landfills, livestock confinement areas, highway or railroad right of ways, and sewage treatment facilities. Others are harder to locate like abandoned cesspools, underground tanks, French drains, dry wells, or old dumps and mines.

The Municipal Water Works of Pineville reviewed intake locations and the delineated SWPAs to verify the existence of PSSCs provided by the WVBPH and identify new PSSCs. If possible, locations of regulated sites within the SWPA were confirmed. Information on any new or updated PSSCs identified by Pineville and not already appearing in datasets from the WVBPH can be found in **Table 7**.

**Table 7. Locally Identified Potential Significant Sources of Contamination**

PSSC Number	Map Code	Site Name	Site Description	Relative Risk Score	Comments
14	C-41	Railroad Tracks	Norfolk Southern and CSX Railroads have tracks in the vicinity of the Guyandotte River intake.	Medium	With the current decline in coal production, railroads are hauling less coal and more freight, which could include petroleum products or chemicals.

## 8.3 PRIORITIZATION OF THREATS AND MANAGEMENT STRATEGIES

Once the utility has identified local concerns, they must develop a management plan that identifies specific activities that will be pursued by the public water utility in cooperation and concert with the WVBPH, local health departments, local emergency responders, LEPC and other agencies and organizations to protect the source water from contamination threats.

Depending on the number identified, it may not be feasible to develop management strategies for all of the PSSCs in the SWPA. The identified PSSCs can be prioritized by potential threat to water quality, proximity to the intake(s), and local concern. The highest priority PSSCs can be addressed first in the initial management plan. Lower ranked PSSCs can be addressed in the future as time and resources allow. To assess the threat to the source water, water systems should consider confidential information about each PSC. This information may be obtained from state or local emergency planning agencies, Tier II reports, facility owner, facility groundwater protection plans, spill prevention response plans, results of field investigations, etc.

In addition to identifying and prioritizing PSSCs within the SWPA, local source water concerns may also focus on critical areas. For the purposes of this source water protection plan, a critical area is defined as an area that is identified by local stakeholders and can lie within or outside of the ZCC. Critical areas may contain one or more PSSCs which would require immediate response to address a potential incident that could impact the source water.

A list of priority PSSCs was selected and ranked by the Pineville Protection Team. This list reflects the concerns of this specific utility and may contain PSSCs not previously identified and not within the ZCC or ZPC. **Table 8** contains a description of why each critical area or PSC is considered a threat and what management strategies the utility is either currently using or could use in the future to address each threat.



## 9.0 IMPLEMENTATION PLAN FOR MANAGEMENT STRATEGIES

The Municipal Water Works of Pineville reviewed the recommended strategies listed in their previous source water protection plan, to consider if any of them should be adopted and incorporated in this updated plan. **Table 9** provides a brief statement summarizing the status of the recommended strategies. **Table 9** also lists strategies from a previous plan that are being incorporated in this plan update

When considering source management strategies and education and outreach strategies, this utility has considered how and when the strategies will be implemented. The initial step in implementation is to establish responsible parties and timelines to implement the strategies. The water utility, working in conjunction with the Protection Team members, can determine the best process for completing activities within the projected time periods. Additional meetings may be needed during the initial effort to complete activities, after which the Protection Team should consider meeting annually to review and update the Source Water Protection Plan. A system of regular updates should be included in every implementation plan.

Proposed commitments and schedules may change but should be well documented and reported to the local stakeholders. If possible, utilities should include cost estimates for strategies to better plan for implementation and possible funding opportunities. Pineville has developed an implementation plan for priority concerns listed in **Table 8**. The responsible team member, timeline, and potential cost of each strategy are presented in **Table 9**. Note: Because timelines may change, future plan updates should describe the status of each strategy and explain the lack of progress.

**Table 8. Priority PSSCs or Critical Areas**

PSSC or Critical Area	Priority Number	Reason for Concern
Railroads and Highways	1	Given the close proximity of the railway and highways to the SWPA, accidental spills, rights-of-way maintenance, and other activities could result in contamination of the water source. Norfolk Southern and CSX run trains near the Guyandotte River intake. A potential train derailment is of particular concern. With the current decline in coal production, railroads are hauling less coal and more freight, which could include petroleum products or chemicals.
Abandoned Mine Lands	2	Abandoned mine sites are also located within the SWPA. Acid mine drainage from both active and surface mines can runoff into the water source after mineral resources are exposed. If not properly treated, acid mine drainage and increased sediments from mine lands may impact the pH, iron, manganese, conductivity, and aluminum levels in the water. Abandoned mines with no responsible party are a greater threat to source water than active mines in regulatory compliance.
Unsewered Homes and Failing Septic Systems	3	Unsewered homes and failing septic systems can leach into surrounding soils or runoff into streams and potentially contaminate water resources.
Oil and Gas Well Development including Marcellus Shale Reserves	4	<p>Gas wells, when properly drilled in accordance with their permits; do not pose an imminent danger. However, brine removed from the wells must be collected and handled properly to prevent contamination to the surface and ground waters. Also, road cuts to access gas well sites may create erosion issues that can cause increased sediments and turbidity in surface waters.</p> <p>Drilling into Marcellus Shale gas reserves may concern Pineville Municipal. Fracturing fluid, typically water and sand, is forced into the shale to open cracks and fissures so more natural gas can flow out of the formation. Chemicals can also be added to this fluid. There are several methods to dispose of this fluid, which include deep injection or trucking the fluid to a treatment facility. Fracturing water could migrate or be spilled into the source water.</p>

PSSC or Critical Area	Priority Number	Reason for Concern
Public Wastewater Facilities	5	There are wastewater treatment package plants located in the SWPA. Accidental releases or line breaks may allow untreated sewage to contaminate the surface source water.
Active Mines	6	<p>There is active mining ongoing near the ZCC. The active mining results in heavy equipment traveling and working on site. Oils, grease, diesel, and other automotive fluids can migrate to water if spilled on the surface and not properly contained. In addition, increased sediments running off from disturbed mine lands and haul roads may contaminate the water making it more difficult to treat.</p> <p>In some areas in West Virginia, abandoned underground mines are being used to dispose of coal slurry and/or brine water produced from oil and gas wells. These underground mines may discharge into surface waters. An underground injection well is permitted to: Pinnacle Mining Company, LLC. (Note: Pinnacle is being purchased by Seneca Mining Company). An NPDES outlet associated with this permit is located along a stream in the ZCC. Pinnacle Mining Company may be using this site to inject coal slurry, a mix of chemicals used to clean coal and coal rejects that could contaminate the source water if released.</p>
Gas Stations, Equipment Repair Shop, Heavy equipment storage yards, truck fleets, and school bus terminal	7	<p>Oils, antifreeze, and other automobile fluids can cause contamination of water sources if not cleaned up and disposed of properly. Above ground and Underground Storage Tanks (USTs), particularly those at historic sites, may leak and contaminate groundwater sources.</p> <p>In addition, stormwater runoff from industrial and commercial sites, including bus terminal car washes may also contain automotive fluids and other substances that if not managed properly could contaminate water resources.</p>
WVDOH Garage	8	Highway maintenance garages have on-site materials that could contaminate both surface and ground water, if not handled, stored, and disposed of properly. Depending on the location, these may include: fuels in above and underground storage tanks, other automotive fluids (ex. oil, antifreeze) to maintain vehicles, pesticides, road salts (solid and liquid), etc.

PSSC or Critical Area	Priority Number	Reason for Concern
AEP Substation	9	Electrical transformers contain polychlorinated biphenyl (PCBs) or oil, that can cause contamination of source water if the transformer explodes or leaks; or if there is a spill during maintenance.

**Table 9. Priority PSSC Management Strategies**

PSSC or Critical Area	Management Activity	Responsible Protection Team Member	Status/Schedule	Comments	Estimated Cost
Previous Plan Status	There were 9 management strategies recommended in the existing plan. One of these strategies has been accomplished. Nine of these are ongoing or continue to be a concern. These are incorporated in this plan update and listed below.				
Source Water Protection Area	The utility is required to update the Source Water Protection Plan at least every 3 years and continue to monitor any ongoing or new activities that occur in the watershed.	Municipal Water Works of Pineville Protection Team	Ongoing every 3 years. Next update in 2019		
Active Mines and Abandoned Mine Lands	<p>Pinnacle Mining Company, LLC is located in the watershed for Pinnacle Creek, the backup source for Pineville Municipal, which drains into the Guyandotte River downstream of the intakes. (Note: Pinnacle is being purchased by Seneca Mining Company). For this reason, the Pinnacle Mining Company, LLC activities do not directly impact the intake. However, a second mine is located in the Guyandotte River.</p> <p>Provide SWPA boundaries to the coal companies to communicate the source water vulnerability and ask that they follow BMPs to reduce the potential from contamination.</p>	PWS operator and staff	Within 1 year	Participate in public comment periods before WVDEP issues injection or mining permits. In addition to existing mines, information on permit applications can be obtained through automated emails from the WVDEP Office of Mining and Reclamation. To request to be added as a recipient of these notifications, visit:	Minimal costs associated with staff time.

	<p>Monitor the underground injection control NPDES outlet by requesting data from the company to remain aware of the situation and detect contamination.</p> <p>Determine if the mining companies have prepared emergency response plans. Ask to be included in these plans, so that the water system is notified of immediately in case of an emergency and can act accordingly to track a contamination plume and shut down the intakes to insure that no contamination enters the plant.</p>			<p><a href="http://www.dep.wv.gov/dmr/Pages/default.aspx">http://www.dep.wv.gov/dmr/Pages/default.aspx</a></p> <p>An incident occurred recently when a mine representative reported that contaminated water had been released above the plant. The operator was able to shut down the plant for the night and the plume had passed by the morning with no impact to the plant or the drinking water.</p>	
Oil and Gas Well Development including Marcellus Shale Reserves	<p>The system should correspond with the WVDEP in order to obtain information about newly permitted wells in their SWPA and keep up to date on potential new regulations. Work with WVDEP and drilling companies to ensure BMPs are adhered to for well sites.</p> <p>If additional Marcellus Shale Wells are permitted, consider sampling raw water for bromide as described in Source Water Monitoring, to establish a baseline and detect elevated levels of bromide that can impact treatment and distribution.</p>	PWS operator and staff	Within 1 year	<p>Communicate the SWPA to the WVDEP Office of Oil and Gas staff at 304-926-0499 Ext. 1062 and ask for their consideration when approving future permits.</p> <p>To gain information on permitted oil and gas sites (as well as mining permits), the water system can access online interactive maps provided through WVDEP. Both of the following sites provide similar information in different formats:</p> <p><a href="http://gisonline.dep.wv.gov/fogm/index.html">http://gisonline.dep.wv.gov/fogm/index.html</a>,  <a href="http://gis.dep.wv.gov/mapping/oog/oog.html">http://gis.dep.wv.gov/mapping/oog/oog.html</a></p>	PWS operator and staff
Public Wastewater Facilities	Communicate with the public wastewater system personnel to raise awareness of the source water vulnerability to contamination from leaking lines.	PWS operator and staff	Within 1 year		Minimal costs associated with staff time.

Un-sewered Homes and Failing Septic Systems	<p>Work with the county health department to identify areas in the SWPA where home owners may need to install septic systems or service existing systems. Consider teaming with community to identify areas that would benefit from a cluster system to eliminate straight pipes and/or malfunctioning septic systems.</p> <p>Provide information regarding contamination and source water protection in mailings to homeowners with septic systems. Consider printing a reminder on water bills for residents to have their septic system inspected regularly and pumped every 5-10 years as needed.</p>	PWS operator and staff	Within 5 years	Also, the USEPA provides a complete guide for residents to maintain their septic systems, for the guide, visit: <a href="http://epa.gov/owm/septic/pubs/homeowner_guide_long.pdf">http://epa.gov/owm/septic/pubs/homeowner_guide_long.pdf</a>	Supporting an extension, through participation in public meetings and assistance in securing easements, funding, etc. can be done at minimal costs to the water system.
Railroad/Highway	<p>Coordinate with emergency officials to be better prepared in the event of a hazardous spill.</p> <p>Contact the railroad companies and trucking companies to determine materials transported through area. Work with the companies to create an emergency response plan should any incident occur.</p>	PWS operator and staff	Within 1 year		Minimal costs associated with staff time.
Gas Stations, Equipment Repair Shop, Heavy equipment storage yards, truck fleets, and school bus terminal	<p>Communicate with gas station/equipment storage and repair facility owners the need for them to follow regulations and institute BMPs to contain and clean up spills. Provide owners or operators with copies of material on underground storage tank maintenance.</p> <p>Consider whether operating or historic stations and shops are compliant with rules regarding USTs and leaking underground storage tanks (LUSTs).</p> <p>Determine if stormwater management at commercial/industrial facilities includes oil/grease separators. Remind owners/operators to maintain the separators and dispose of petroleum products responsibly to prevent them from entering water resources. Inquire about facilities Groundwater Protection Plans (GPPs) and ask that the facilities consider the source water in planning and implementing BMPs.</p>	PWS operator and staff	Within 1 year	If you suspect an issue with an UST or LUST, contact the WVDEP at (304) 926-0499 and ask for the Underground Storage Tank Staff for an inspection.	Minimal costs associated with staff time.

WVDOH Garage	The water system may request and review the WVDOH facility GPP to ensure that BMPs exist to prevent contamination to the source.	PWS operator and staff	Within 1 year	Each WVDOH facility prepares and submits GPPs to the WVDEP that will include BMPs to prevent contamination to groundwater. These same BMPs should serve to protect surface water, including sources of drinking water.	Minimal costs associated with staff time.
AEP Substation	Contact electric utility to determine if they have a spill/leak prevention program for the transformer storage center. Also determine their procedure should contamination occur. Communicate the boundaries of the ZCC to raise awareness with utility company to ensure BMPs	PWS operator and staff	Within 1 year		Minimal costs associated with staff time.
Railroad/Highway	Determine the herbicides used within the ROWs and any other chemicals used.  Communicate the boundaries of the SWPA to raise awareness to ensure BMPs during railroad and highway maintenance.	PWS operator and staff	Within 1 year	Herbicide labeling is developed with guidance from the USEPA providing information on application. This guidance has been developed with public health in mind and may list restrictions for application to prevent herbicide migration into water supplies.	Minimal costs associated with staff time.

## 10.0 EDUCATION AND OUTREACH STRATEGIES

The goal of education and outreach is to raise awareness of the need to protect drinking water supplies and build support for implementation strategies. Education and outreach activities will also ensure that affected citizens and other local stakeholders are kept informed and provided an opportunity to contribute to the development of the source water protection plan. Pineville has created an Education and Outreach plan that describes activities it has either already implemented or could implement in the future to keep the local community involved in protecting their source of drinking water. This information can be found in **Table 10**.



**Table 10. Education and Outreach Implementation Plan**

Education and Outreach Strategy	Description of Activity	Responsible Protection Team Member	Status/Schedule	Comments	Estimated Cost
Consumer Confidence Report	The water system publishes a Consumer Confidence Report (CCR) annually, as required by the Safe Drinking Water Act, which is sent to all water customers. Information concerning the Source Water Assessment is included in the CCR. In the future, the system will include a reference to this source water protection plan and how customers can access a copy.	PWS operator and staff	Annually	This would be in addition to required Source Water Assessment information, including source of water and susceptibility to contamination.	CCR required by SDWA, included in annual budget.
Brochures, pamphlets, and letters	<p>Send a letter and/or brochure providing educational information to residences and businesses. These will alert the recipients of the need for source water protection and conservation. Businesses that use greater-than-household quantities of regulated substances may receive a different letter. See <b>Appendix E</b> for example letters and brochure that can be customized. Funding for the brochures may be available through the Wellhead and Source Water Protection Grant Program.</p> <p>Several organizations provide information and resources on the internet, related to certain source water concerns and PCSs. The utility will consider obtaining these materials when needed, to educate the community. Examples of these resources are described below.</p> <p>Due to recent heightened concerns about the effects of pharmaceuticals in surface water bodies, the Ohio River Valley Water Sanitation Commission (ORSANCO) developed a pamphlet regarding pharmaceutical disposal. This pamphlet can be viewed and possibly ordered from:  <a href="http://orsanco.org/index.php/brochures">http://orsanco.org/index.php/brochures</a></p> <p>The Source Water Collaborative has released an educational brochure building tool to assist with creating custom</p>	PWS operator and staff	Within 1 year	Brochure is included in Appendix E. Funding may be available through the grant program. Development of other outreach material may be delegated to a volunteer with appropriate skills.	Cost in brochure printing and mailing.

	<p>brochures targeting local decision makers. This tool is available at: <a href="http://www.yourwateryourdecision.org">http://www.yourwateryourdecision.org</a> and may assist in community planning and development.</p> <p>USEPA Water Sense Simple Steps to Save Water (EPA-832-F-07-011) presents benefits of conserving water. Focusing not only on the environment, but also on the financial savings associated with conservation. The brochure can be viewed at: <a href="http://www.epa.gov/watersense/docs/ws_simplesteps508.pdf">http://www.epa.gov/watersense/docs/ws_simplesteps508.pdf</a></p>				
School Curricula	<p>Work with the school system to incorporate source water activities into the school curricula. One example of school curricula is Project WET. For more information regarding free workshops to educate area teachers on Project WET, visit <a href="http://www.dep.wv.gov/WWE/getinvolved/WET/Pages/default.aspx">http://www.dep.wv.gov/WWE/getinvolved/WET/Pages/default.aspx</a>, or contact the WVDEP at 304-926-0495.</p> <p>In addition, the USEPA offers free educational materials for teachers and students, including classroom lessons, fact sheets, and interactive games and activities, for grades K-12. These materials can be accessed at the following websites.</p> <p>For general source water protection: <a href="http://www.epa.gov/safewater/kids/index.html">http://www.epa.gov/safewater/kids/index.html</a>.</p> <p>For water conservation: <a href="http://www.epa.gov/watersense/resources/educational_materials.html">http://www.epa.gov/watersense/resources/educational_materials.html</a></p> <p>Similar protection and conservation related resources can be found at the Groundwater Foundation website; <a href="http://www.groundwater.org/kc/kc.html">http://www.groundwater.org/kc/kc.html</a></p> <p>Visit school or invite students for a plant tour to tie in with school curricula.</p> <p>Ask the school to include message in school newsletter to raise awareness about source water protection and conservation.</p>	PWS operator and staff	If invited to participate in classroom or asked to provide tours.	Can provide websites with free education materials to promote source water protection and conservation. Also operator may visit school or invite students for a plant tour to tie in with classroom materials.	Minimal costs. Would require time to coordinate, visit classroom and provide tour.
Plant Tours	<p>Provide tours of the water plant to interested organizations such as watershed groups, schools, and civic organizations. Tours will be offered as requested.</p>	PWS operator and staff	Ongoing – as requested		Minimal cost associated with operator's time.

	Organize a tour with local Emergency Responders to make them familiar with the facilities in the event of an emergency.				
Emergency Planning and Coordination	Participate with local fire departments and County Emergency Services on a regular basis. This will ensure that all the agencies are in constant communication with one another and prepared in the event of an emergency.	PWS operator and staff	Ongoing and continuing annually		Cost associated with participation in training activities.
Partner with Watershed Association	Partner with local watershed associations or other civic groups. These groups may have similar goals and available volunteers that can integrate source water protection into their efforts. One such organization is the Upper Guyandotte Watershed Association. To find out more information visit: <a href="http://www.ugwawv.org/">http://www.ugwawv.org/</a> or contact them at: PO Box 196 Mullens, WV 25882; phone: (304) 250-7053.	PWS operator and staff	Monthly/ annually	These groups may have similar goals and available volunteers that can integrate source water protection into their efforts. One such organization is the Upper Guyandotte Watershed Association.  Mayor Tim Ellison has had meetings with this watershed group in the past.	Cost associated with participation in activities.
Public Meeting	If needed hold an informational meeting with local residents about source water protection efforts. The meeting will increase awareness of the connection between land use and drinking water quality. This meeting could be structured as a water fair/public event with drinking water displays and activities. This can be combined with activities of the local watershed associations.	PWS operator and staff	In future if needed.	May be structured as a water fair.	Minimal cost related to operator time.

## 11.0 CONTINGENCY PLAN

The goal of contingency planning is to identify and document how the utility will prepare for and respond to any drinking water shortages or emergencies that may occur due to short and long term water interruption, or incidents of spill or contamination. During contingency planning, utilities should examine their capacity to protect their intake, treatment, and distribution system from contamination. They should also review their ability to use alternative sources and minimize water loss, as well as their ability to operate during power outages. In addition, utilities should report the feasibility of establishing an early warning monitoring system and meeting future water demands.

Isolating or diverting any possible contaminant from the intake for a public water system is an important strategy in the event of an emergency. One commonly used method of diverting contaminants from an intake is establishing booms around the intake. This can be effective, but only for contaminants that float on the surface of the water. Alternatively, utilities can choose to pump floating contaminants from the water or chemically neutralize the contaminant before it enters the treatment facility.

Public utilities using surface sources should be able to close the intake by one means or another. However, depending upon the system, methods for doing so could vary greatly and include closing valves, lowering hatches or gates, raising the intake piping out of the water, or shutting down pumps. Systems should have plans in place in advance as to the best method to protect the intake and treatment facility. Utilities may benefit from turning off pumps and, if possible, closing the intake opening to prevent contaminants from entering the piping leading to the pumps. Utilities should also have a plan in place to sample raw water to identify the movement of a contaminant plume and allow for maximum pumping time before shutting down an intake (See Early Warning Monitoring System). The amount of time that an intake can remain closed depends on the water infrastructure and should be determined by the utility before an emergency occurs. The longer an intake can remain closed in such a case, the better.

Raw and treated water storage capacity also becomes extremely important in the event of such an emergency. Storage capacity can directly determine how effectively a water system can respond to a contamination event and how long an intake can remain closed. Information regarding the water shortage response capability of Municipal Water Works of Pineville is provided in **Table 11**.

### 11.1 RESPONSE NETWORKS AND COMMUNICATION

Statewide initiatives for emergency response, including source water related incidents, are being developed. These include the West Virginia Water/Wastewater Agency Response Network (WV WARN, see <http://www.wvwarn.org/>) and the Rural Water Association Emergency Response Team (see <http://www.wvrwa.org/>). Municipal Water Works of Pineville has analyzed its ability to effectively respond to emergencies and this information is also provided in **Table 11**.

**Table 11. Municipal Water Works of Pineville Water Shortage Response Capability**

Can the utility isolate or divert contamination from the intake or groundwater supply?	No
Describe the utility's capability to isolate or divert potential contaminants:	N/A
Can the utility switch to an alternative water source or intake that can supply full capacity at any time?	Yes
Describe in detail the utility's capability to switch to an alternative source:	The MWWP can switch to the Pinnacle Creek backup source by opening a gate valve on the Pinnacle Creek intake and closing gate the valve on the primary intake.

<b>Can the utility close the water intake to prevent contamination from entering the water supply?</b>	Yes
<b>How long can the intake stay closed?</b>	The intake can stay closed as long as Pinnacle Creek can supply water.
<b>Describe the process to close the intake:</b>	Closing gate valves.
<b>Describe the treated water storage capacity of the water system:</b>	The MWWP has 6 storage tanks totaling 1,200,000 gallons of treated water storage.
<b>Is the utility a member of WVRWA Emergency Response Team?</b>	Yes
<b>Is the utility a member of WV-WARN?</b>	Yes
<b>List any other mutual aid agreements to provide or receive assistance in the event of an emergency:</b>	No

Information for this table was taken from the Source Water Protection Contingency Plan prepared by The Thrasher Group. The complete report is provided as Appendix D.

## 11.2 OPERATION DURING LOSS OF POWER

Municipal Water Works of Pineville analyzed its ability to operate effectively during a loss of power. This involved ensuring a means to supply water through treatment, storage, and distribution without creating a public health emergency. Information regarding the utility's capacity for operation during power outages is summarized in **Table 12**.

**Table 12. Generator Capacity**

<b>What is the type and capacity of the generator needed to operate during a loss of power?</b>	Stationary 150 kW generator with a 260A automatic transfer switch	
<b>Can the utility connect to generator at intake/wellhead? If yes, select a scenario that best describes system.</b>	No; the generator would need to be able to connect to an emergency quick connect power connection to provide power service.	
<b>Can the utility connect to generator at treatment facility? If yes, select a scenario that best describes system.</b>	No; the generator would need to be able to connect to an emergency quick connect power connection to provide power service.	
<b>Can the utility connect to a generator in distribution system? If yes, select a scenario that best describes system.</b>	No; the system would require an upgrade for quick connect power connections to provide power service.	
<b>Does the utility have adequate fuel on hand for the generator?</b>	No	
	<b>Gallons</b>	<b>Hours</b>

<b>What is your on-hand fuel storage and how long will it last operating at full capacity?</b>		N/A	N/A
<b>Provide a list of suppliers that could provide generators and fuel in the event of an emergency:</b>	<b>Supplier</b>		<b>Phone Number</b>
	<b>Generator</b>	Caterpillar	(304) 949-6400
	<b>Generator</b>	Cummins	(304) 769-1012
	<b>Fuel</b>	RT Rogers	(304) 466-1733
<b>Does the utility test the generator(s) periodically?</b>		N/A	
<b>Does the utility routinely maintain the generator?</b>		N/A	
<b>If no scenario describing the ability to connect to generator matches the utility's system or if utility does not have ability to connect to a generator, describe plans to respond to power outages:</b>		During a power outage the utility does not have a backup source of power. The utility has inquired about procuring emergency generators for the pump station and treatment facility. Pineville is in the process of applying for a grant to purchase a 150 kW generator.	

Information for this table was taken from the Source Water Protection Contingency Plan prepared by The Thrasher Group. The complete report is provided as Appendix D.

## 11.3 FUTURE WATER SUPPLY NEEDS

When planning for potential emergencies and developing contingency plans, a utility needs to not only consider their current demands for treated water but also account for likely future needs. This could mean expanding current intake sources or developing new ones in the near future. This can be an expensive and time consuming process, and any water utility should take this into account when determining emergency preparedness. Municipal Water Works of Pineville has analyzed its ability to meet future water demands at current capacity, and this information is included in **Table 13**.

**Table 13. Future Water Supply Needs for Municipal Water Works of Pineville**

<b>Is the utility able to meet water demands with the current production capacity over the next 5 years? If so, explain how you plan to do so.</b>	The MWWP can meet the demands with current production. The US Census data show a slow decline in the population in Pineville, WV and Wyoming County and no extensions are proposed at this time.
<b>If not, describe the circumstances and plans to increase production capacity:</b>	N/A

## 11.4 WATER LOSS CALCULATION

In any public water system there is a certain percentage of the total treated water that does not reach the customer. Some of this water is used in treatment plant processes such as back washing filters or flushing piping, but there is usually at least a small percentage that goes unaccounted for. To measure and report on this

unaccounted for water, a public utility must use the method described in the Public Service Commission's rule, *Rules for the Government of Water Utilities*, 150CSR7, section 5.6. The rule defines unaccounted for water as the volume of water introduced into the distribution system less all metered usage and all known non-metered usage which can be estimated with reasonable accuracy.

To further clarify, metered usages are most often those that are distributed to customers. Non-metered usages that are being estimated include usage by fire departments for fires or training, un-metered bulk sells, flushing to maintain the distribution system, and water used for backwashing filters and cleaning settling basins. By totaling the known metered and non-metered uses the utility calculates unaccounted for water. Note: To complete annual reports submitted to the PSC, utilities typically account for known water main breaks by estimating the amount of water lost. However, for the purposes of the source water protection plan, any water lost due to leaks, even if the system is aware of how much water is lost at a main break, is not considered a use. Water lost through leaks and main breaks cannot be controlled during a water shortages or other emergencies and should be included in the calculation of percentage of water loss for purposes of the source water protection plan. The data in **Table 14** is taken from the most recently submitted Municipal Water Works of Pineville PSC Annual Report.

**Table 14. Water Loss Information\***

<b>Total Water Pumped (gal)</b>		165,944,000
<b>Total Water Purchased (gal)</b>		0
<b>Total Water Pumped and Purchased (gal)</b>		165,944,000
<b>Water Loss Accounted for Except Main Leaks (gal)</b>	<b>Mains, Plants, Filters, Flushing, etc.</b>	0
	<b>Fire Department</b>	0
	<b>Back Washing</b>	29,400,000
	<b>Blowing Settling Basins</b>	0
<b>Total Water Loss Accounted For Except Main Leaks</b>		29,400,000
<b>Water Sold- Total Gallons (gal)</b>		53,045,000
<b>Unaccounted For Lost Water (gal)</b>		83,499,000
<b>Water lost from main leaks (gal)</b>		0
<b>Total gallons of Unaccounted for Lost Water and Water Lost from Main Leaks (gal)</b>		83,499,000
<b>Total Percent Unaccounted For Water and Water Lost from Main Leaks (gal)</b>		<b>50%</b>
<b>If total percentage of Unaccounted for Water is greater than 15%, please describe any measures that could be taken to correct this problem:</b>		Increase inspections; replacement of older lines is being conducted.



\*This information was taken from the 2014 Public Service Commission Annual Report for Municipal Water Works of Pineville

## 11.5 EARLY WARNING MONITORING SYSTEM

Public water utilities are required to provide an examination of the technical and economic feasibility of implementing an early warning monitoring system. Implementing an early warning monitoring system may be approached in different ways depending upon the water utility's resources and threats to the source water. A utility may install a continuous monitoring system that will provide real time information regarding water quality conditions. This would require utilities to analyze the data to establish what condition is indicative of a contamination event. Continuous monitoring will provide results for a predetermined set of parameters. The more parameters that are being monitored, the more sophisticated the monitoring equipment will need to be. When establishing a continuous monitoring system, the utility should consider the logistics of placing and maintaining the equipment, and receiving output data from the equipment.

Alternately, or in addition, a utility may also pull periodic grab samples on a regular basis, or in case of a reported incident. The grab samples may be analyzed for specific contaminants. A utility should examine their PSSCs to determine what chemical contaminants could pose a threat to the water source. If possible, the utility should plan in advance how those contaminants will be detected. Consideration should be given to where samples will be collected, the preservations and hold times for samples, available laboratories to analyze samples, and costs associated with the sampling event. Regardless of the type of monitoring (continuous or grab), utilities should collect samples for their source throughout the year to better understand the baseline water quality conditions and natural seasonal fluctuations. Establishing a baseline will help determine if changes in the water quality are indicative of a contamination event and inform the needed response.

Every utility should establish a system or process for receiving or detecting chemical threats with sufficient time to respond to protect the treatment facility and public health. All approaches to receiving and responding to an early warning should incorporate communication with facility owners and operators that pose a threat to the water quality, with state and local emergency response agencies, with surrounding water utilities, and with the public. Communication plays an important role in knowing how to interpret data and how to respond.

Municipal Water Works of Pineville has analyzed its ability to monitor for and detect potential contaminants that could impact its source water. Information regarding this utility's early warning monitoring system capabilities is provided in **Table 15** and in **Appendix B**.

**Table 15. Early Warning Monitoring System Capabilities**

<b>Does your system currently receive spill notifications from a state agency, neighboring water system, local emergency responders, or other facilities? If yes, from whom do you receive notices?</b>	Yes; The utility receives spill notifications from the WV Health Department.	
<b>Are you aware of any facilities, land uses, or critical areas within your protection areas where chemical contaminants could be released or spilled?</b>	No	
<b>Are you prepared to detect potential contaminants if notified of a spill?</b>	Yes	
<b>List laboratories (and contact information) on whom you would rely to analyze water samples in case of a reported spill.</b>	<b>Laboratories</b>	
	<b>Name</b>	<b>Contact</b>
	REI Consultants	(304) 255-2500
	WV Office of Lab Services	(304) 558-3530



<b>Do you have an understanding of baseline or normal conditions for your source water quality that accounts for seasonal fluctuations?</b>		Yes
<b>Does your utility currently monitor raw water (through continuous monitoring or periodic grab samples) at the surface water intake or from a groundwater source on a regular basis?</b>		No
<b>Provide or estimate the capital and O&amp;M costs for your current or proposed early warning system or upgraded system.</b>	<b>Monitoring System</b>	<b>Hach sc1000 (B-2)</b>
	<b>Capital</b>	\$50,000
	<b>Yearly O &amp; M</b>	\$750
<b>Do you serve more than 100,000 customers? If so, please describe the methods you use to monitor at the same technical levels utilized by ORSANCO.</b>		No

Information for this table was taken from the Source Water Protection Contingency Plan prepared by The Thrasher Group. The complete report is provided as Appendix D.

## 12.0 SINGLE SOURCE FEASIBILITY STUDY

If a public water utility's water supply plant is served by a single-source intake to a surface water source of supply or a surface water influenced source of supply, the submitted source water protection plan must also include an examination and analysis of the technical and economic feasibility of alternative sources of water to provide continued safe and reliable public water service in the event that its primary source of supply is detrimentally affected by contamination, release, spill event or other reason. These alternatives may include a secondary intake, two days of additional raw or treated water storage, an interconnection with neighboring systems, or other options identified on a local level. Note: a suitable secondary intake would draw water supplies from a substantially different location or water source.

To accomplish this requirement, utilities should examine all existing or possible alternatives and rank them by their technical, economic, and environmental feasibility. To have a consistent and complete method for ranking alternatives, WVBPH has developed a feasibility study guide. This guide provides several criteria to consider for each category, organized in a Feasibility Study Matrix. By completing the Feasibility Study Matrix, utilities will demonstrate the process used to examine the feasibility of each alternative and document scores that compare the alternatives. The Feasibility Study matrix and summary of the results are presented in an alternatives feasibility study attached as **Appendix D**.

## 13.0 COMMUNICATION PLAN

The Municipal Water Works of Pineville has also developed a Communication Plan that documents the manner in which the public water utility, working in concert with state and local emergency response agencies, shall notify the local health agencies and the public of the initial spill or contamination event and provide updated information related to any contamination or impairment of the system's drinking water supply. The initial notification to the public will occur in any event no later than thirty minutes after the public water system becomes aware of the spill, release, or potential contamination of the public water system. A copy of the source water protection plan and the Communication Plan has been provided to the local fire department. Pineville will update the Communication Plan as needed to ensure contact information is up to date.

Procedures should be in place to effectively react to the kinds of catastrophic spills that can reasonably be predicted at the source location or within the SWPA. The chain-of-command, notification procedures and response actions should be known by all water system employees.

The WVBPH has developed a recommended communication plan template that provides a tiered incident communication process to provide a universal system of alert levels to utilities and water system managers. The comprehensive Communication Plan for the Municipal Water Works of Pineville is attached as **Appendix C** for internal review and planning purposes only.

The West Virginia Department of Environmental Protection is capable of providing expertise and assistance related to prevention, containment, and clean-up of chemical spills. The West Virginia Department of Environmental Protection Emergency Response 24-hour Phone is 1-800-642-3074. The West Virginia Department of Environmental Protection also operates an upstream distance estimator that can be used to determine the distance from a spill site to the closest public water supply surface water intake.

## 14.0 EMERGENCY RESPONSE

A public water utility must be prepared for any number of emergency scenarios and events that would require immediate response. It is imperative that information about key contacts, emergency services, and downstream water systems be posted and readily available in the event of an emergency. Elements of this source water protection plan, such as the contingency planning and communication plan, may contain similar information to the utility's emergency response plan. However, the emergency response plan is to be kept confidential and is not included in this source water protection plan. An Emergency Short Form is included in **Appendix C** to support the Communicate Plan by providing quick access to important information about emergency response and are to be used for internal review and planning purposes only.

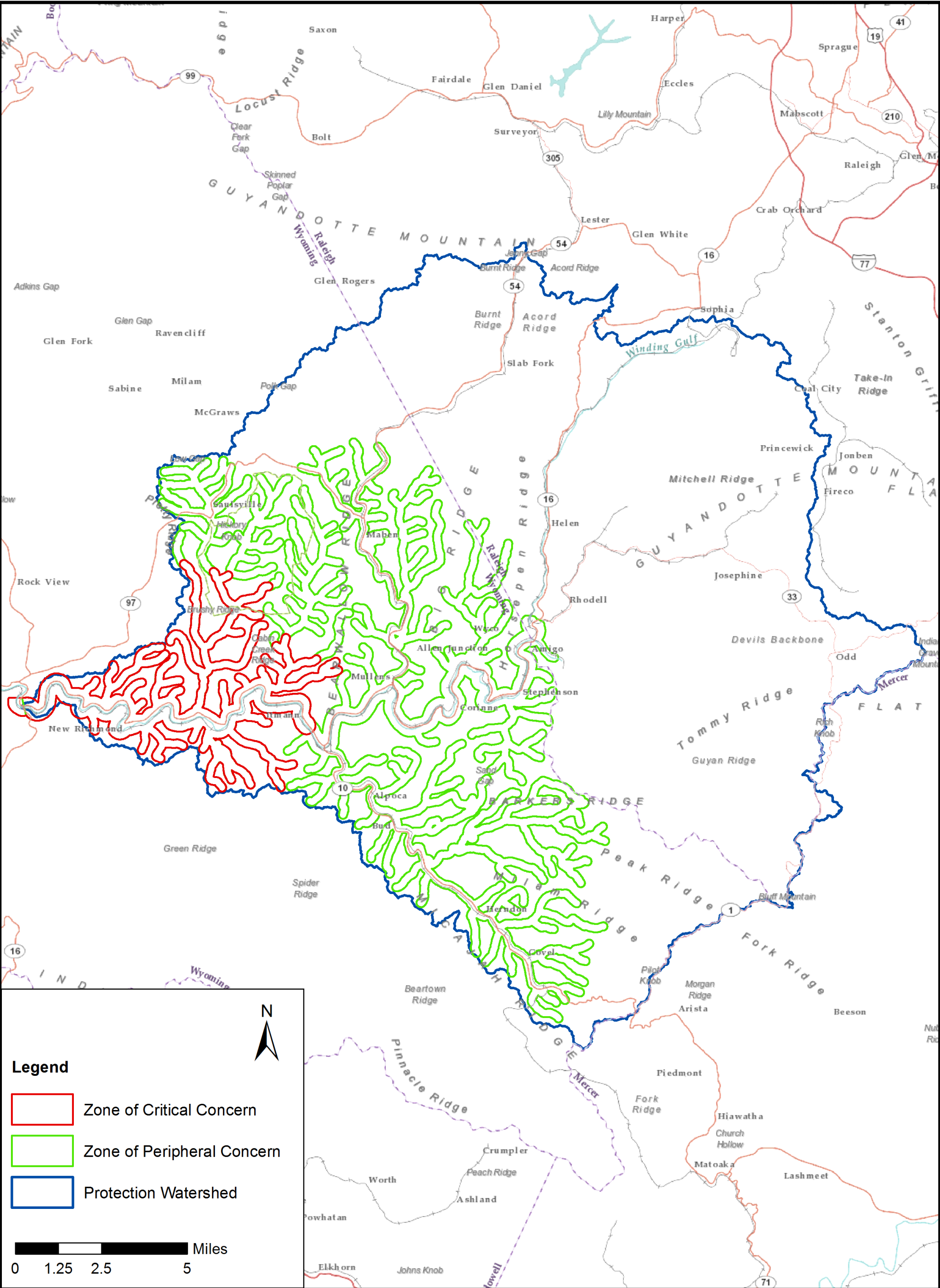
## 15.0 CONCLUSION

This report represents a detailed explanation of the required elements of Municipal Water Works of Pineville's Source Water Protection Plan. Any supporting documentation or other materials that the utility considers relevant to their plan can be found in **Appendix E**.

This source water protection plan is intended to help prepare community public water systems all over West Virginia to properly handle any emergencies that might compromise the quality of the system's source water supply. It is imperative that this plan is updated as often as necessary to reflect the changing circumstances within the water system. The protection team should continue to meet regularly and continue to engage the public whenever possible. Communities taking local responsibility for the quality of their source water is the most effective way to prevent contamination and protect a water system against contaminated drinking water. Community cooperation, sufficient preparation, and accurate monitoring are all critical components of this source water protection plan, and a multi-faceted approach is the only way to ensure that a system is as protected as possible against source water degradation.

**APPENDIX A. FIGURES**



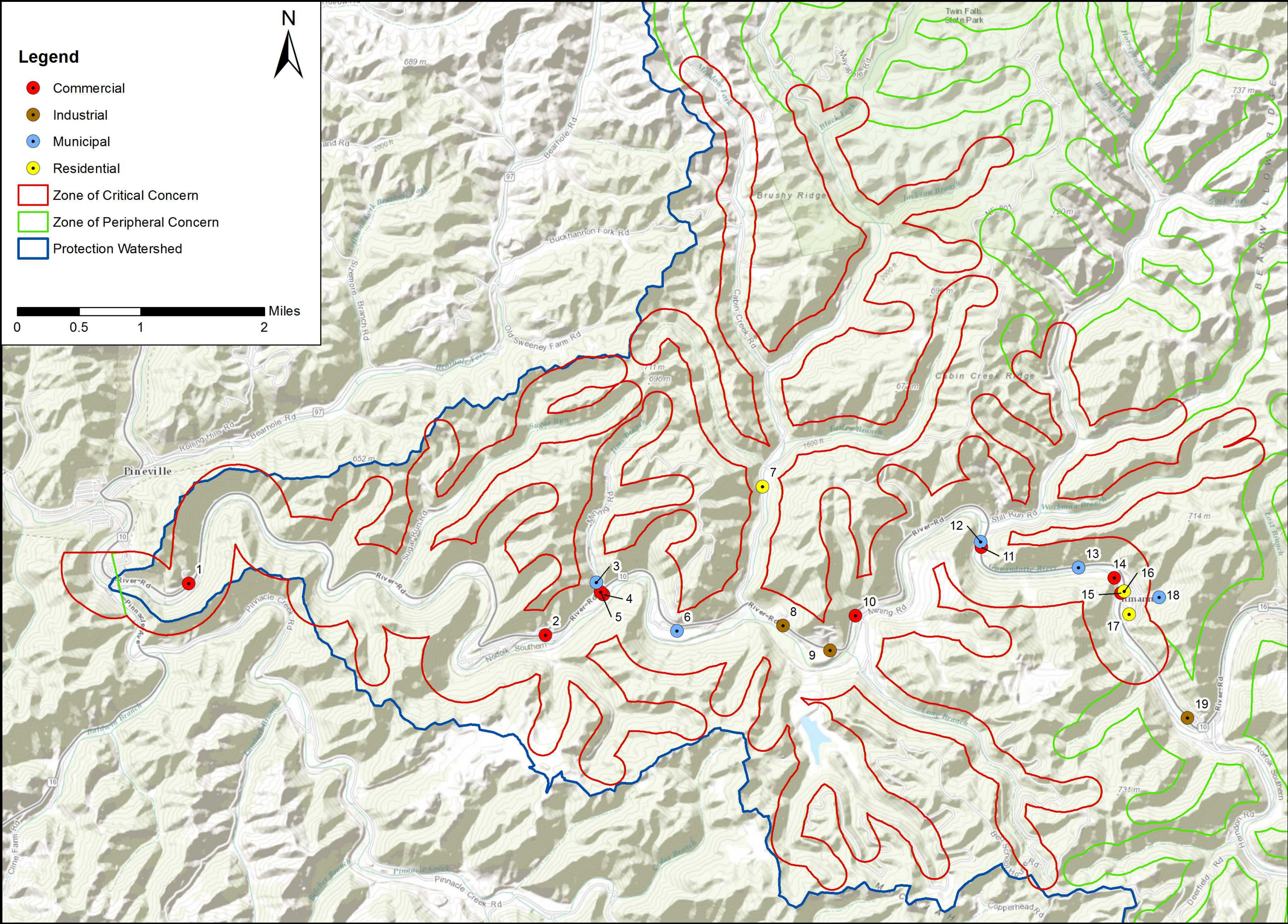




**List of Locally Identified PSSCs**

<b>PCS No.</b>	<b>Site Name</b>	<b>Site Description</b>	<b>Comments</b>
1	Repair Shops (engine, appliances, etc.)	Pineville Paving and Excavating with above ground fuel tanks	none
2	Historic gas stations	McKinney's Service Center now just a store, pumps gone	none
3	Storm water basins/drains	Andy & Abby Leasing Inc.	Surveyed, Found. Stormwater permit for mine operations. Same as R-342
4	Repair Shops (engine, appliances, etc.)	C & C Leasing & Excavating Inc.	Surveyed, Found. Stormwater permit for heavy equipment yard Same as R-332 and 341
5	Repair Shops (engine, appliances, etc.)	Jim's Branch mine parking and equipment yard with above ground diesel tanks	none
6	Schools	Wyoming East High School	none
7	Residential (single family homes)	Trailer Park	none
8	Mines: abandoned	Abandoned Mine Land	Abandoned mine lands not partially revegetated
9	Machine and metalworking shops	Machine Shop - Closed	Abandoned machine shop with two large above ground tanks very rusty
10	Railroad Tracks and Yards	Site of former prep plant now just a railroad crossing	none
11	Utility Substation Transformers	AEP Itmann substation	none
12	Road maintenance depots/deicing operations	Still Run Sub-Headquarters WVDOH yard	Same as R-333 thru R-335
13	Road maintenance depots/deicing operations	WV DOH Roadway depot	Surveyed, Found. Stormwater outlets for gravel stockpiles between road and river. Same as R-339
14	Railroad Tracks and Yards	Norfolk and Southern railroad runs along Guyandotte River	none
15	Historic gas stations	Ashland Oil, pumps still there - Closed	Same as PCS 5235
16	Other	Shelter and homeless rehab facility in old mine headquarters	none
17	Septic Systems (discharging to stream or surface)		none
18	Other		none
19	Machine and metalworking shops		Not surveyed; outside ZCC





- Legend**
- Commercial
  - Industrial
  - Municipal
  - Residential
  - Zone of Critical Concern
  - Zone of Peripheral Concern
  - Protection Watershed

0 0.5 1 2 Miles

Figure A-3  
Field Verified PSSCs

Municipal Water Works of Pineville  
PWSID: WV3305517  
Source Water Protection Plan



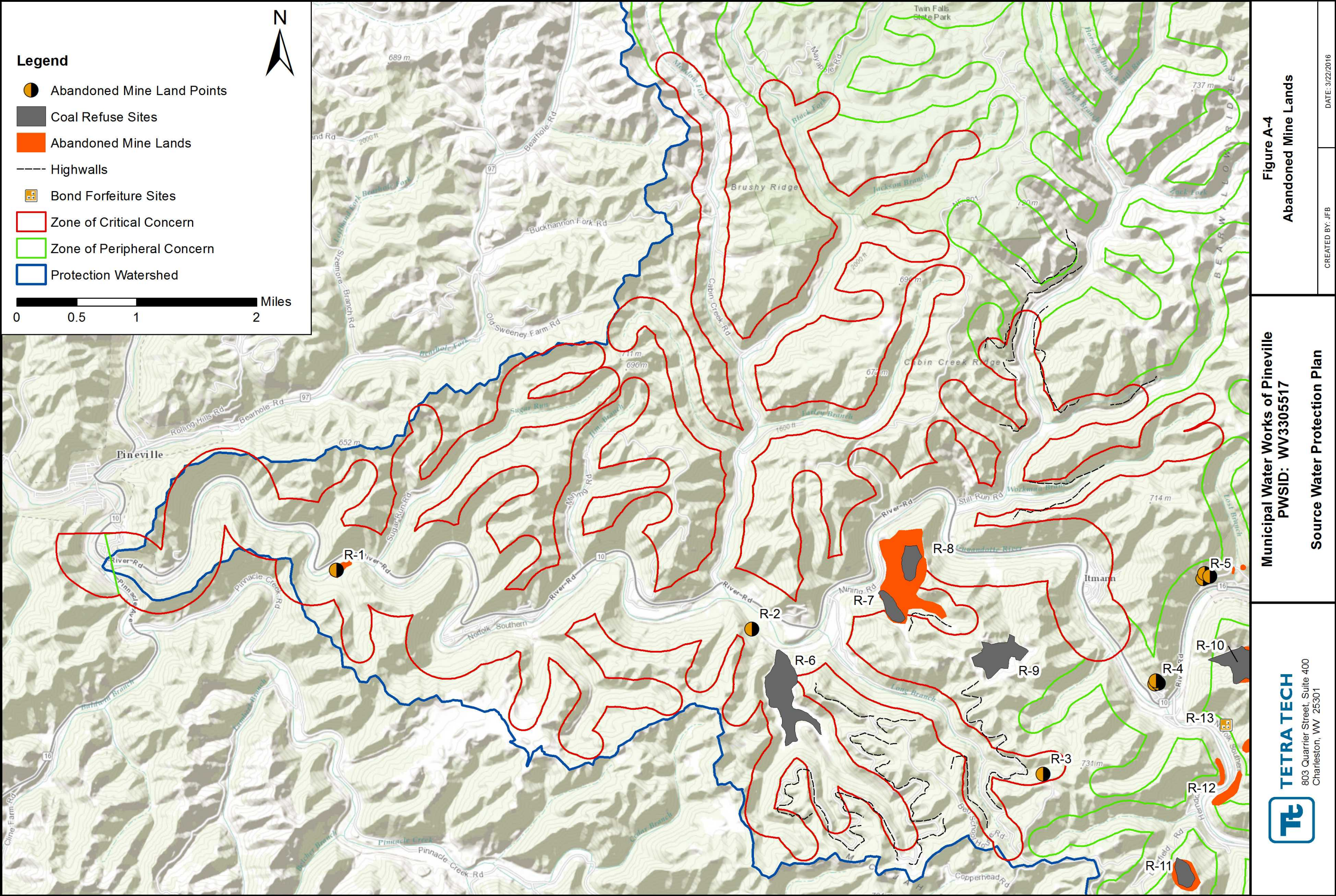
**List of Regulated PSSCs**

<b>Regulated No.</b>	<b>Site Name</b>	<b>Site Description</b>	<b>Regulation ID</b>	<b>Comments</b>
R-1	Abandoned Mine Lands	Sugar Run Refuse	WV001944	none
R-2	Abandoned Mine Lands	Mullens (Adkins) Portal	WV006107	none
R-3	Abandoned Mine Lands	Micajah Ridge/Herndon Heights/Itma	WV006193	none
R-4	Abandoned Mine Lands	Itmann (Burdiss) Drainage	WV006286	none
R-5	Abandoned Mine Lands	Mullens Portals & Refuse	WV005823	none
R-6	Coal Refuse Sites	Joe's Branch Facility	1211-WV04-40709-01	Reclaimed
R-7	Coal Refuse Sites	Itmann Refuse Pile	none	none
R-8	Coal Refuse Sites	Itmann Refuse Pile	none	none
R-9	Coal Refuse Sites	Itmann Prep Plant	none	Consolidation Coal Company
R-10	Coal Refuse Sites	Tralee Coal Refuse Impoundment	1211-WV04-40051-01	Amigo Smokeless Coal Co
R-11	Coal Refuse Sites	Big Hollow Mine Dump	none	none
R-12	Abandoned Mine Lands	Tralee Mine Dump	WV000930	none
R-13	Special Reclamation-Bond Forfeiture Site	Amigo Smokeless Coal Co.	O-161-83	To Be Reclaimed By Aml
R-14	Mining Outlet	Consolidation Coal Company	WV0044024	HPUGD
R-15	Mining Outlet	Riverside Energy Company, LLC	WV1016229	HPUGD
R-16	Mining Outlet	Riverside Energy Company, LLC	WV1016342	HPUGD
R-17	Mining Outlet	Pinnacle Mining Company, LLC	WV0090000	HPUGD
R-18	Mining Outlet	Riverside Energy Company, LLC	WV1016342	HPUGD
R-19	Mining Outlet	Riverside Energy Company, LLC	WV1018523	HPUGD
R-20	Mining Outlet	Consolidation Coal Company	WV0044024	HPUGD
R-21	Mining Outlet	Consolidation Coal Company	WV0044024	HPUGD
R-22	Mining Outlet	Consolidation Coal Company	WV0053121	HPUPR
R-23	Mining Outlet	Consolidation Coal Company	WV0050521	HPUGD
R-24	Mining Outlet	Riverside Energy Company, LLC	WV1019015	HPUGD
R-25	Mining Outlet	Consolidation Coal Company	WV0044024	HPUGD

R-26	Mining Outlet	Consolidation Coal Company	WV0050521	HPUGD
R-27	Mining Outlet	Consolidation Coal Company	WV0050521	HPUGD
R-28	Mining Outlet	Consolidation Coal Company	WV0049671	HPUGD
R-29	Mining Outlet	Consolidation Coal Company	WV0050521	HPUGD
R-30	Mining Outlet	Amigo Smokeless Coal Co	WV0002739	HPU
R-31	Mining Outlet	Consolidation Coal Company	WV0049671	HPUGD
R-32	Mining Outlet	Riverside Energy Company, LLC	WV1016181	HPUGD
R-33	Mining Outlet	Consolidation Coal Company	WV0049671	HPUGD
R-34	Mining Outlet	Riverside Energy Company, LLC	WV1016181	HPUGD
R-35	Mining Outlet	Riverside Energy Company, LLC	WV1019082	HPUGD
R-36	Mining Outlet	Riverside Energy Company, LLC	WV1018566	HPUGD
R-37	Mining Outlet	Riverside Energy Company, LLC	WV1005596	HPUGD
R-38	Mining Outlet	Brooks Run Mining Company, LLC	WV1018621	HPUGD
R-39	Mining Outlet	Riverside Energy Company, LLC	WV1016342	HPUGD
R-40	NPDES Outlet	Andy & Abby Leasing, Inc. Trucking Garage	WVG610876	Storm Water Industrial (GP)
R-41	NPDES Outlet	C & C LEASING & EXCAV.	WVG611218	Storm Water Industrial (GP)
R-42	NPDES Outlet	Wyoming County East High School	WVG551076	Sewage General
R-43	NPDES Outlet	Still Run Substation	WVG980037	WV DOH+MUN
R-44	NPDES Outlet	NA	032210	Septic Seal Permit
R-45	NPDES Outlet	Itmann Stockpile	WVG980036	WV DOH+MUN
R-46	NPDES Outlet	MULLENS SALVAGE	WVG610130	Storm Water Industrial (GP)
R-47	NPDES Outlet	Telstar Fab & Welding	WVG610961	Storm Water Industrial (GP)
R-48	NPDES Outlet	Itmann Bud Mountain Water System Upgrade and Extension	WVR103776	Storm Water Construction (GP)
R-49	NPDES Outlet	Norfolk Southern Railway Company, Elmore Yard	0579-03-109	5W32 - Septic Systems(Drain Field Disposal Mthd)

R-50	NPDES Outlet	Tralee Transfer Station	WVG611468	Storm Water Industrial (GP)
R-51	NPDES Outlet	Twin Falls State Park - 2	WVG551093	Sewage General
R-52	Above Ground Storage Tank	Andy & Abby Leasing Inc.	055-00000989	
R-53	Above Ground Storage Tank	Andy & Abby Leasing Inc.	055-00000990	
R-54	Above Ground Storage Tank	Meadows Oil Co Inc.	999-00000224	
R-55	Above Ground Storage Tank	Meadows Oil Co Inc.	999-00000225	
R-56	Above Ground Storage Tank	Andy & Abby Leasing Inc.	055-00000991	
R-57	Above Ground Storage Tank	Meadows Oil Co Inc.	999-00000229	
R-58	Above Ground Storage Tank	C & C Leasing & Excavating Inc.	055-00001522	
R-59	Above Ground Storage Tank	Kepler Processing Company, LLC Kepler Plant (E004500)	055-00001072	
R-60	Above Ground Storage Tank	WVDOH-Equipment Division Still Run Substation	055-00001087	
R-61	Above Ground Storage Tank	WVDOH -Equipment Division Still Run Substation	055-00001088	
R-62	Above Ground Storage Tank	Maxum Petroleum Products, Inc. Black Stallion Coal	055-00001208	
R-63	Above Ground Storage Tank	Maxum Petroleum Products, Inc., Frasure Creek #7	055-00001161	
R-64	Above Ground Storage Tank	Exco Resources (Pa), LLC, Maben Office	055-00000939	







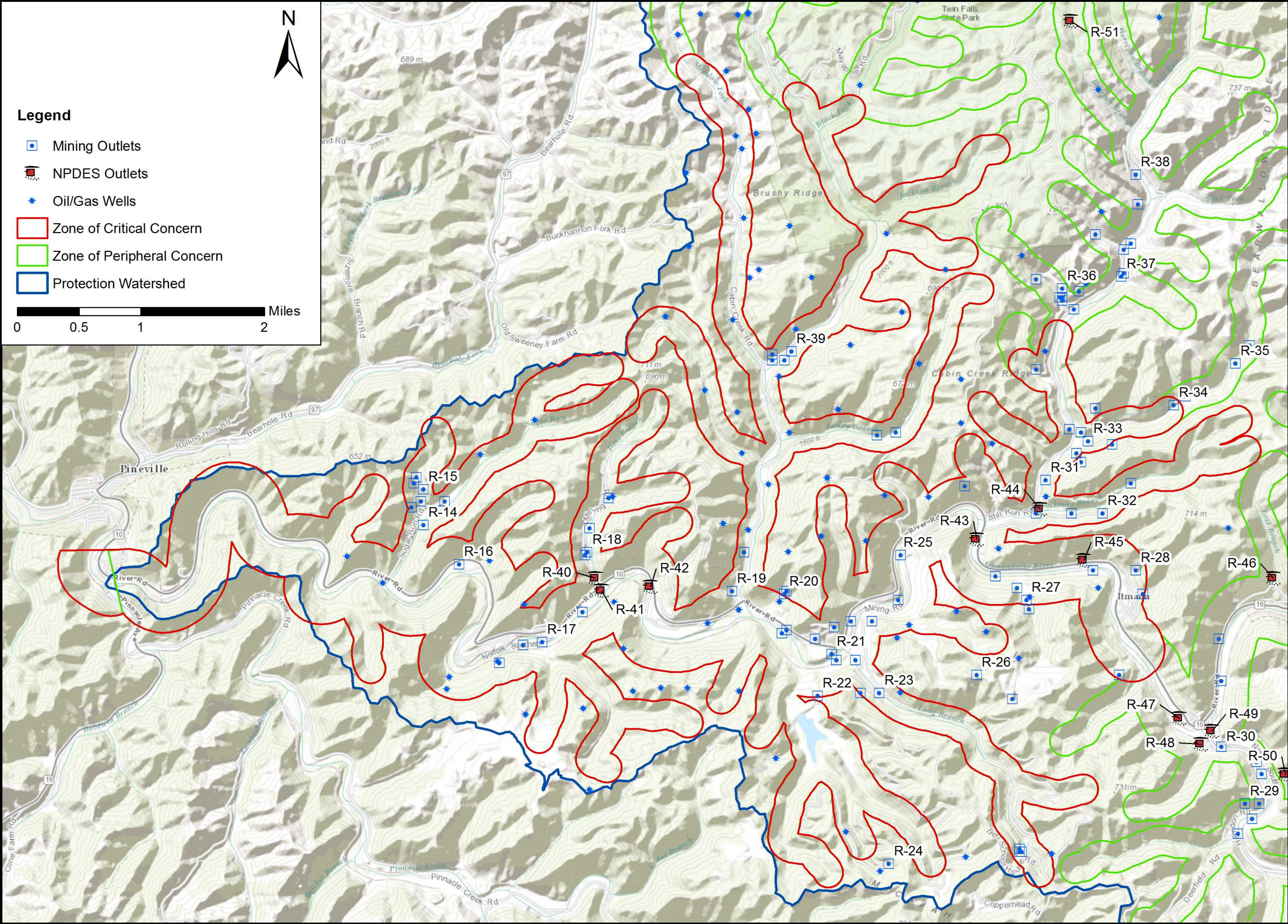


Figure A-5  
Permitted Outlets and  
Oil/Gas Wells

Municipal Water Works of Pineville  
PWSID: WV3305517  
Source Water Protection Plan







## APPENDIX B. EARLY WARNING MONITORING SYSTEM FORMS

### **Select and Attach the Appropriate Form for Your System**

**Form A-**Complete if you currently have an early warning monitoring system installed for a surface water source

**Form B-**If you do not currently have an early warning monitoring system installed for a surface water intake or are planning to upgrade or replace your current system, complete this form.

**Form C-**Complete if you currently have an early warning monitoring system for a groundwater source.

**Form D-** If you do not currently have an early warning monitoring system installed for a groundwater source or are planning to upgrade or replace your current system, complete this form.

**Note:** You may need to fill out and attach more than one form to your Protection Plan, depending on your current situation.

**Appendix B-Form B****Proposed Early Warning Monitoring System Worksheet- Surface Water Source**

<b>Describe the type of early warning detection equipment that could be installed, including the design.</b>
The early warning detection equipment that could be installed includes a level controller, display module, back panel, level & trough along with conductivity, oil-in-water, ORP, and pH sensors.
<b>Where would the equipment be located?</b>
Early warning monitoring systems would be located on the raw water intake line where the Guyandotte River surface water would enter the laboratory in the water treatment facility.
<b>What would the maintenance plan for the monitoring equipment entail?</b>
The proposed maintenance plan for the monitoring equipment shall consist of annual cleaning and/or exchanging of the probe(s) for the controller. Periodic calibration of the unit may also be required.
<b>Describe the proposed sampling plan at the monitoring site.</b>
Sampling of water quality data occurs every minute. The MWWP water system would need to retrieve data from the "History" of the controller data collector one or two times per month.
<b>Describe the proposed procedures for data management and analysis.</b>
Data management for the early warning monitoring system consists of data points (up to 500 points or approximately six months per probe) being recorded in the "History" of the controller data collector. To access the "History", the probe has to be plugged into the controller. Data is able to be removed via USB or through a local SCADA system.

## APPENDIX C. COMMUNICATION PLAN TEMPLATE

### Municipal Water Works of Pineville

PWSID: WV3305517 District: District 1, Beckley

Certified Operator: Corbet Justus

Contact Phone Number: 304-732-6251

Contact Email Address: townofpineville@outlook.com

Plan Developed On: April 2016 Plan Update: \_\_\_\_\_

### ACKNOWLEDGMENTS:

This plan was developed by Municipal Water Works of Pineville to meet certain requirements of the Source Water and Assessment Protection Program (SWAPP) and the Wellhead Protection Program (WHPP) for the State of West Virginia, as directed by the federal Safe Drinking Water Act (SDWA) and state laws and regulations.

---

## TABLE OF CONTENTS

---

INTRODUCTION.....	1
TIERS REPORTING SYSTEM .....	1
COMMUNICATION TEAM.....	2
COMMUNICATION TEAM DUTIES .....	3
INCIDENT / EVENT COMMUNICATION PROCEDURE .....	3
TIERS FLOW CHART .....	5
EMERGENCY SHORT FORMS .....	6
EMERGENCY CONTACT INFORMATION.....	9
PRESS RELEASE ATTACHMENTS .....	10

## INTRODUCTION

Legislative Rule 64CSR3 requires public water systems to develop a Communication Plan that documents how public water suppliers, working in concert with state and local emergency response agencies, shall notify state and local health agencies and the public in the event of a spill or contamination event that poses a potential threat to public health and safety. The plan must indicate how the public water supplier will provide updated information, with an initial notification to the public to occur no later than thirty minutes after the supplier becomes aware that the spill, release or potential contamination of the public water system poses a potential threat to public health and safety.

The public water system has responsibility to communicate to the public, as well as to state and local health agencies. This plan is intended to comply with the requirements of Legislative Rule 64CSR3, and other state and federal regulations.

## TIERS REPORTING SYSTEM

This water system has elected to use the *Tiered Incident / Event Reporting System* (TIERS) for communicating with the public, agencies, the media, and other entities in the event of a spill or other incident that may threaten water quality. TIERS provides a multi-level notification framework, which escalates the communicated threat level commensurate with the drinking water system risks associated with a particular contamination incident or event. TIERS also includes a procedural flow chart illustrating key incident response communication functions and how they interface with overall event response / incident management actions. Finally, TIERS identifies the roles and responsibilities for key people involved in risk response, public notification, news media and other communication.

TIERS provides an easy-to-remember five-tiered **A-B-C-D-E** risk-based incident response communication format, as described below. Table 1 provides also associated risk levels.

**A = Announcement.** The water system is issuing an announcement to the public and public agencies about an incident or event that may pose a threat to water quality. Additional information will be provided as it becomes available. As always, if water system customers notice anything unusual about their water, they should contact the water system

**B = Boil Water Advisory.** A boil water advisory has been issued by the water system. Customers may use the water for showering, bathing, and other non-potable uses, but should boil water used for drinking or cooking.

**C = Cannot Drink.** The water system asks that users not drink or cook with the water at this time. Non-potable uses, such as showering, bathing, cleaning, and outdoor uses are not affected.

**D = Do Not Use.** An incident or event has occurred affecting nearly all uses of the water. Do not use the water for drinking, cooking, showering, bathing, cleaning, or other tasks where water can come in contact with your skin. Water can be used for flushing commodes and fire protection.

**E=Emergency.** Water cannot be used for any reason.

Tier	Tier Category	Risk Level	Tier Summary
A	Announcement	Low	The water system is issuing an announcement to the public and public agencies about an incident or event that could pose a threat to public health and safety. Additional information will be provided as it becomes available.

<b>B</b>	<b>Boil Water Advisory</b>	Moderate	Water system users are advised to boil any water to be used for drinking or cooking, due to possible microbial contamination. The system operator will notify users when the boil water advisory is lifted.
<b>C</b>	<b>Cannot Drink</b>	High	System users should not drink or cook with the water until further notice. The water can still be used for showering, bathing, cleaning, and other tasks.
<b>D</b>	<b>Do Not Use</b>	Very High	The water should only be used for flushing commodes and fire protection until further notice. More information on this notice will be provided as soon as it is available.
<b>E</b>	<b>Emergency</b>	Extremely High	The water should not be used for any purpose until further notice. More information on this notice will be provided as soon as it is available.

## COMMUNICATION TEAM

The Communication Team for the water system is listed in the table below, along with key roles. In the event of a spill or other incident that may affect water quality, the water system spokesperson will provide initial information, until the team assembles (if necessary) to provide follow-up communication.

Water system communication team members, organizations, and roles.

<b>Team Member Name</b>	<b>Organization</b>	<b>Phone</b>	<b>Email</b>	<b>Role</b>
Dean Meadows	Wyoming County Emergency Management	304-732-6953	-	Primary Spokesperson
Mike Goode	Pineville Volunteer Fire Department	304-732-8000	-	Secondary Spokesperson
				Member
				Member
				Member
				Member

In the event of a spill, release, or other incident that may threaten water quality, members of the team who are available will coordinate with the management staff of the local water supplier to:

- Collect information needed to investigate, analyze, and characterize the incident/event
- Provide information to the management staff, so they can decide how to respond
- Assist the management staff in handling event response and communication duties
- Coordinate fully and seamlessly with the management staff to ensure response effectiveness

## COMMUNICATION TEAM DUTIES

The communication team will be responsible for working cooperatively with the management staff and state and local emergency response agencies to notify local health agencies and the public of the initial spill or contamination event. The team will also provide updated information related to any contamination or impairment of the source water supply or the system's drinking water supply.

**According to Legislative Rule 64CSR3, the initial notification to the public will occur no later than thirty minutes after the public water system becomes aware that the spill, release or potential contamination of the public water system poses a potential threat to public health and safety.**

As part of the group implementing the Source Water Protection Plan, team members are expected to be familiar with the plan, including incident/event response and communication tasks. Specifically, team members should:

- Be knowledgeable on elements of the Source Water Protection Plan and Communication Plan
- Attend team meetings to ensure up-to-date knowledge of the system and its functions
- Participate in periodic exercises that “game out” incident response and communication tasks
- Help to educate local officials, the media, and others on source water protection
- Cooperate with water supplier efforts to coordinate incident response communication
- Be prepared to respond to requests for field investigations of reported incidents
- Not speak on behalf of the water supplier unless designated as the system's spokesperson

The primary spokesperson will be responsible for speaking on behalf of the water system to local agencies, the public, and the news media. The spokesperson should work with the management staff and the team to ensure that all communication is clear, accurate, timely, and consistent. The spokesperson may authorize and/or direct others to issue news releases or other information that has been approved by the system's management staff. The spokesperson is expected to be on call immediately when an incident or event which may threaten water quality occurs. The spokesperson will perform the following tasks in the event of a spill, release, or other event that threatens water quality:

- Announce which risk level (A, B, C, D, or E) will apply to the public notifications that are issued
- Issue news releases, updates, and other information regarding the incident/event
- Use the news media, email, social media, and other appropriate information venues
- Ensure that news releases are sent to local health agencies and the public
- Respond to questions from the news media and others regarding the incident/event
- Appear at news conferences and interviews to explain incident response, etc.

## INCIDENT / EVENT COMMUNICATION PROCEDURE

The flow chart in this section illustrates how the water system will respond when it receives a report that a spill, release, or other contamination event may have occurred. Key elements of the flow chart are described below.

### Communication with agencies, the public, and the media during threat incidents

Upon initial notification of the incident/event, system managers and staff will collect information and verify the need for further investigation. Only properly trained personnel will perform onsite investigations if permitted by emergency responders. If further investigation is warranted, and the initial facts support it, the water system spokesperson will issue a public communication statement consistent with the threat level. In addition, water system personnel and partners will be dispatched to conduct reconnaissance, a threat assessment, and a threat characterization, if present. This work may include:

- Verification of the incident/event type (spill, release, etc.)
- Location of incident/event
- Type of material(s) involved in spill, release, etc.
- Quantity of material involved
- Potential of the material to move, migrate, or be transported

- Relevant time factor(s) in the risk assessment (e.g., downstream movement rate)
- Overall level of risk to water system, whether low, moderate, high, or very high
- Development of the initial risk characterization

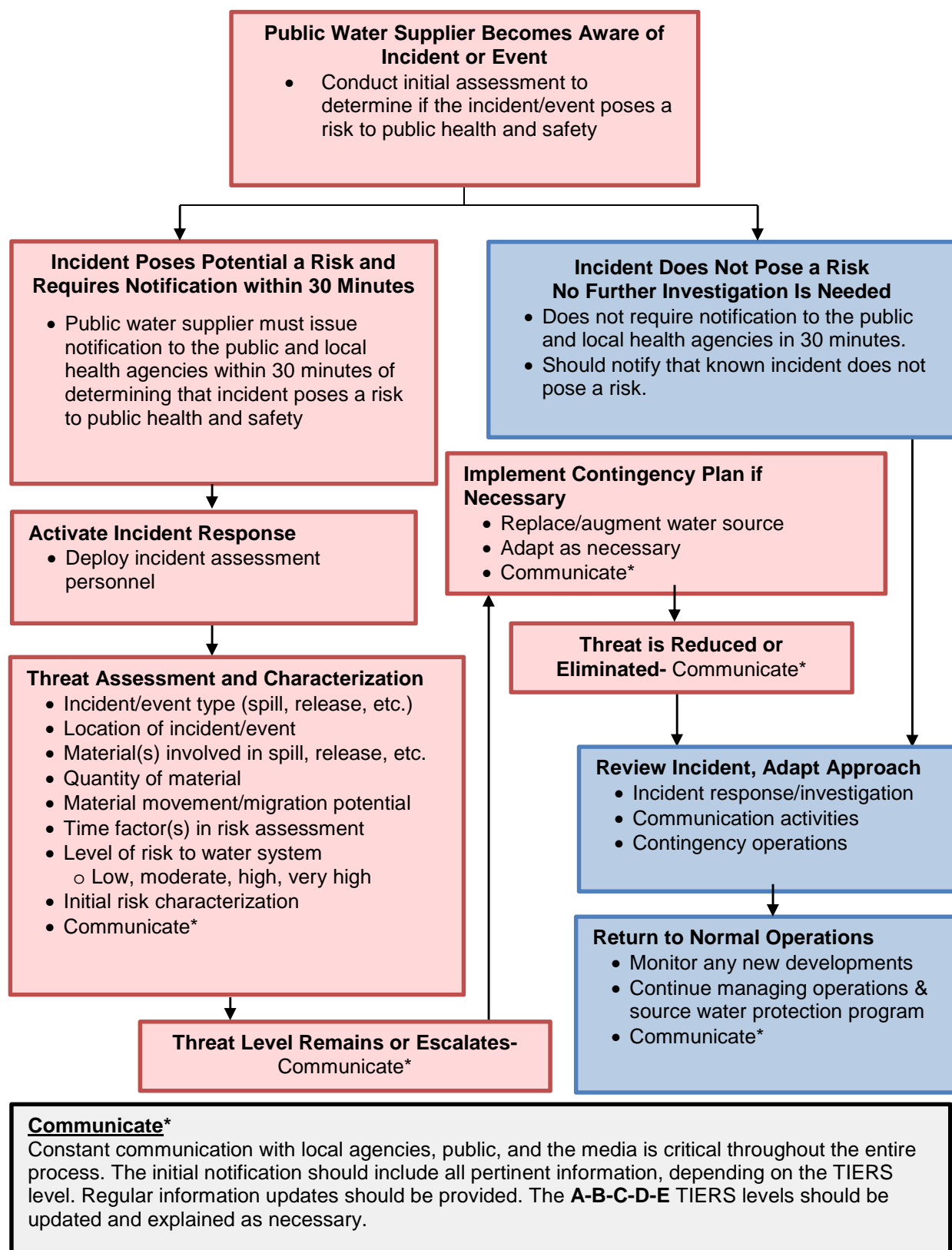
As the flow chart indicates, several iterative cycles will occur after the initial threat assessment, including communication with local agencies and the public, further investigation of the incident, possible implementation of the water system's contingency plan, and eventual elimination of the threat and a return to normal operations. Communication activities during this period will include:

- The initial release (i.e., **A**nnouncement, **B**oil Water Advisory, **C**annot Drink, **D**o Not Use, or **E**mergency)
  - Sent to local health agencies, the public, and the news media within 30 minutes
- Notification of the local water system's source water protection and communication teams
  - If warranted by initial findings regarding the spill, release, or incident
- Notification of the WV Bureau of Public Health
  - As required
- Periodic information updates, as incident response information is received
- Updates to the applicable A-B-C-D-E advisory tier, as necessary

If time permits and the need arises, after the threat level is reduced, the water system staff, the communication and source water protection teams, and their partners may conduct a post-event review and assessment. The purpose of the review is to examine the response to the incident, relevant communication activities, and overall outcomes. Plans and procedures may be updated, altered, or adapted based on lessons learned through this process.



## TIERS FLOW CHART



## EMERGENCY SHORT FORMS

### Emergency Communication Information

	Name	Phone Number	Email
<b>Designated spokesperson:</b>	Dean Meadows	304-732-6953	-
<b>Alternate spokesperson:</b>	Mike Goode	304-732-8000	-
<b>Designated location to disseminate information to media:</b>	Radio Station WPMW 92.7 FM Mullens		
<b>Methods of contacting affected residents:</b>	<b>Word of mouth</b>	X	<b>Posted notices</b>
	<b>Door-to-door canvassing</b>		<b>Radio</b>
	<b>Newspaper</b>		<b>Other</b>
<b>Media contacts:</b>	<b>Name</b>	<b>Title</b>	<b>Phone Number</b>
	N/A		

### Emergency Services Contacts

	Name	Emergency Phone	Alternate Phone	Email
<b>Local Police</b>	Pineville Police Department	911	304-732-6255	
<b>Local Fire Department</b>	Pineville Volunteer Fire Department	911	304-732-6588	
<b>Local Ambulance Service</b>	Stat Ambulance Service Incorporated, JanCare Ambulance Service	911	304-732-9116 304-732-6111	
<b>Hazardous Material Response Service</b>	Pineville Volunteer Fire Department	911	304-732-6588	

### Sensitive Populations

<b>Other communities that are served by the utility:</b>	Pineville serves 10 customers in Ravenclyff-McGraws-Saulsville PSD			
<b>Major user/sensitive population notification:</b>	<b>Name</b>	<b>Emergency Phone</b>	<b>Alternate Phone</b>	
	Pineville Elementary	304-732-7966	-	
	Pineville Middle School	304-732-6442		
	Head Start in Mullinsville	304-682-8271		
	Wyoming County Career and Technical Center	304-732-8050		
Pineville Manor	-			
<b>EED District Office Contact:</b>	<b>Name</b>	<b>Phone</b>	<b>Email</b>	
	John Stafford	304-256-6666 Alternate Phone- EED Central Office 304-558-2981	John.PB.Stafford@wv.gov	
<b>OEHS Readiness Coordinator</b>	Warren Von Dollen	304-356-4290 (main) 304-550-5607 (cell)	warren.r.vondollen@wv.gov	
<b>Downstream Water Contacts:</b>	<b>Water System Name</b>	<b>Contact Name</b>	<b>Emergency Phone</b>	<b>Alternate Phone</b>
	Gilbert Water Works	James Deel, Operator	304-664-3727	-
<b>Are you planning on implementing the TIER system?</b>		Yes		

### Key Personnel

	Name	Title	Phone	Email
Key staff responsible for coordinating emergency response procedures?	Corbet V. Justus	Chief Operator	Daytime 304-732-6251 After Hours 304-732-8793	-
	Darren Justus	Operator	Daytime 304-732-6251 After Hours 304-732-8989	-
Staff responsible for keeping confidential PSSC information and releasing to emergency responders:	Dean Meadows	Wyoming County Emergency Management	304-732-6953	-
	Mike Goode	Pineville Volunteer Fire Department	304-732-8000	-

### Emergency Response Information

List laboratories available to perform sample analysis in case of emergency:	Name	Phone
	REI Consultants	(304) 255-2500
	WV Office of Lab Services	(304) 558-3530
Has the utility developed a detailed Emergency Response Plan in accordance with the Public Health Security Bioterrorism Preparedness and Response Pan Act of 2002?	Not specifically for utility, but Wyoming County has a comprehensive county-wide emergency plan.	
When was the Emergency Response Plan developed or last updated?		N/A

## EMERGENCY CONTACT INFORMATION

---

### **State Emergency Spill Notification**

1-800-642-3074

### **Office of Emergency Services**

<http://www.wvdhsem.gov/>

Charleston, WV- (304) 558-5380

### **WV Bureau for Public Health Office of Environmental Health Services (OEHS)**

[www.wvdhhr.org/oehs](http://www.wvdhhr.org/oehs)

### Readiness Coordinator- Warren Von Dollen

Phone; 304-356-4290

Cell; 304-550-5607

E-mail: [warren.r.vondollen@wv.gov](mailto:warren.r.vondollen@wv.gov)

### Environmental Engineering Division Staff

Charleston, Central Office (304) 558-2981

Beckley, District 1 (304) 256-6666

St. Albans, District 2 (304) 722-0611

Kearneysville, District 4 (304) 725-9453

Wheeling, District 5 (304) 238-1145

Fairmont, District 6 (304) 368-2530

### **National Response Center - Chemical, Oil, & Chemical/Biological Terrorism**

1-800-424-8802

### **WV State Fire Marshal's Office**

1-800-233-3473

### **West Virginia State Police**

1-304-746-2100

### **WV Watch – Report Suspicious Activity**

1-866-989-2824

### **DEP Distance Calculator**

<http://tagis.dep.wv.gov/pswcheck/>

---

**PRESS RELEASE ATTACHMENTS**

---

**TIERS Levels A, B, C, D, and E**

**UTILITY ISSUED NOTICE – LEVEL A**  
**PUBLIC WATER SYSTEM ANNOUNCEMENT**  
**A WATER SYSTEM INVESTIGATION IS UNDERWAY**

On \_\_\_\_\_ at \_\_\_\_:\_\_\_\_ AM/PM, the \_\_\_\_\_ Water System began investigating an incident that may affect local water quality.

The incident involves the following situation at this location:

---

---

---

There are no restrictions on water use at this time. As always, if water system customers notice anything unusual about their water – such as abnormal odors, colors, sheen, etc. – they should contact the water system at \_\_\_\_\_.

At this time there is no need for concern if you have consumed or used the water.

Regular updates will be provided about this Announcement as water system staff continue their investigation. Again, there are no restrictions on water use at this time.

State Water System ID# \_\_\_\_\_ Date Distributed: \_\_\_\_\_

**UTILITY ISSUED NOTICE – LEVEL B**  
**BOIL WATER ADVISORY**  
**A BOIL WATER ADVISORY IS IN EFFECT**

On \_\_\_\_\_ at \_\_\_\_:\_\_\_\_ am/pm, a water problem occurred causing contamination of your water. The areas that are affected are as follows:

☐ Entire Water System    or    ☐ Other: \_\_\_\_\_

CONDITIONS INDICATE THERE IS A HIGH PROBABILITY THAT YOUR WATER IS CONTAMINATED. TESTING HAS NOT OCCURRED TO CONFIRM OR DENY THE PRESENCE OF CONTAMINATION IN YOUR WATER.

**What should I do?**

- **DO NOT DRINK THE WATER WITHOUT BOILING IT FIRST.** Bring all water to a boil, let it boil for one minute, and let it cool before using, or use bottled water. Boiled or bottled water should be used for drinking, making ice, brushing teeth, washing dishes, bathing, and food preparation **until further notice**. Boiling kills bacteria and other organisms in the water.

**What happened?**

- The problem is related to \_\_\_\_\_

**What is being done?**

- The water system is taking the following action: \_\_\_\_\_

**What should a customer do if they have consumed or used the water?**

- \_\_\_\_\_

We will inform you when you no longer need to boil your water. We anticipate resolving the problem within \_\_\_\_\_ hours/days. For more information, please contact \_\_\_\_\_ at \_\_\_\_\_ or \_\_\_\_\_ at \_\_\_\_\_.

General guidelines on ways to lessen the health risk are available from the EPA Safe Drinking Water Hotline at 1 (800) 426-4791.

*Please share this information others who use this water, especially those who may not have received this notice directly (for example, people in apartments, nursing homes, schools, and businesses). You can do this by posting this notice in a public place or distributing copies by hand or mail.*

This notice was distributed by \_\_\_\_\_

State Water System ID# \_\_\_\_\_ Date Distributed: \_\_\_\_\_

**UTILITY ISSUED NOTICE – LEVEL C**  
**“CANNOT DRINK” WATER NOTIFICATION**  
**A LEVEL C WATER ADVISORY IS IN EFFECT**

On \_\_\_\_\_ at \_\_\_\_:\_\_\_\_ am/pm, a water problem occurred causing contamination of your water. The areas that are affected are as follows:

☐ Entire Water System    or    ☐ Other: \_\_\_\_\_

CONDITIONS INDICATE THERE IS A HIGH PROBABILITY THAT YOUR WATER IS CONTAMINATED. TESTING HAS NOT OCCURRED TO CONFIRM OR DENY THE PRESENCE OF CONTAMINATION IN YOUR WATER.

**What should I do?**

- **DO NOT DRINK THE WATER.** You can't drink the water, but you can use it for showering, bathing, toilet-flushing, and other non-potable purposes.
- **BOILING WILL NOT PURIFY THE WATER.** Do not drink the water, even if it is boiled. The type of contamination suspected is not removed by boiling.

**What happened?**

- The problem is related to \_\_\_\_\_

**What is being done?**

- The water system is taking the following action: \_\_\_\_\_

**What should a customer do if they have consumed or used the water?**

- \_\_\_\_\_

We will inform you when the water is safe to drink. We anticipate resolving the problem within \_\_\_\_\_ hours/days. For more information – or to report unusual water conditions such as abnormal odors, colors, sheen, etc. – please contact \_\_\_\_\_ at \_\_\_\_\_ or \_\_\_\_\_ at \_\_\_\_\_.

*Please share this information others who use this water, especially those who may not have received this notice directly (for example, people in apartments, nursing homes, schools, and businesses). You can do this by posting this notice in a public place or distributing copies by hand or mail.*

This notice was distributed by \_\_\_\_\_

State Water System ID# \_\_\_\_\_ Date Distributed: \_\_\_\_\_



**UTILITY ISSUED NOTICE – LEVEL D**  
**“DO NOT USE” WATER NOTIFICATION**  
**A LEVEL D WATER ADVISORY IS IN EFFECT**

On \_\_\_\_\_ at \_\_\_\_:\_\_\_\_ am/pm, a water problem occurred causing contamination of your water. The areas that are affected are as follows:

☐ Entire Water System    or    ☐ Other: \_\_\_\_\_

CONDITIONS INDICATE THERE IS A HIGH PROBABILITY THAT YOUR WATER IS CONTAMINATED. TESTING HAS NOT OCCURRED TO CONFIRM OR DENY THE PRESENCE OF CONTAMINATION IN YOUR WATER.

**What should I do?**

- **DO NOT DRINK THE WATER.** The water is contaminated.
- **DO NOT SHOWER OR BATHE IN THE WATER.** You can't use the water for drinking, showering, or bathing. It can be used for toilet flushing and firefighting.
- **BOILING WILL NOT PURIFY THE WATER.** Do not use the water, even if it is boiled. The type of contamination suspected is not removed by boiling.

**What happened?**

- The problem is related to \_\_\_\_\_

**What is being done?**

- The water system is taking the following action: \_\_\_\_\_

**What should a customer do if they have consumed or used the water?**

- \_\_\_\_\_

We will inform you when the water is safe to drink. We anticipate resolving the problem within \_\_\_\_\_ hours/days. For more information – or to report unusual water conditions such as abnormal odors, colors, sheen, etc. – please contact \_\_\_\_\_ at \_\_\_\_\_ or \_\_\_\_\_ at \_\_\_\_\_.

*Please share this information others who use this water, especially those who may not have received this notice directly (for example, people in apartments, nursing homes, schools, and businesses). You can do this by posting this notice in a public place or distributing copies by hand or mail.*

This notice was distributed by \_\_\_\_\_

State Water System ID# \_\_\_\_\_ Date Distributed: \_\_\_\_\_

**UTILITY ISSUED NOTICE – LEVEL E**  
**EMERGENCY WATER NOTIFICATION**  
**A LEVEL E WATER ADVISORY IS IN EFFECT**

On \_\_\_\_\_ at \_\_\_\_:\_\_\_\_ am/pm, a water problem occurred causing contamination of your water. The areas that are affected are as follows:

☐ Entire Water System   or   ☐ Other: \_\_\_\_\_

CONDITIONS INDICATE THERE IS A HIGH PROBABILITY THAT YOUR WATER IS CONTAMINATED. TESTING HAS NOT OCCURRED TO CONFIRM OR DENY THE PRESENCE OF CONTAMINATION IN YOUR WATER.

**What should I do?**

- **DO NOT DRINK THE WATER.** The water is contaminated.
- **DO NOT USE THE WATER FOR ANY PURPOSE!** You can't use the water for drinking, showering, or bathing, or any other use – not even for toilet flushing.
- **BOILING WILL NOT PURIFY THE WATER.** Do not use the water, even if it is boiled. The type of contamination suspected is not removed by boiling.

**What happened?**

- The problem is related to \_\_\_\_\_

**What is being done?**

- The water system is taking the following action: \_\_\_\_\_

**What should a customer do if they have consumed or used the water?**

- \_\_\_\_\_

We will inform you when the water is safe to drink. We anticipate resolving the problem within \_\_\_\_\_ hours/days. For more information – or to report unusual water conditions such as abnormal odors, colors, sheen, etc. – please contact \_\_\_\_\_ at \_\_\_\_\_ or \_\_\_\_\_ at \_\_\_\_\_.

*Please share this information others who use this water, especially those who may not have received this notice directly (for example, people in apartments, nursing homes, schools, and businesses). You can do this by posting this notice in a public place or distributing copies by hand or mail.*

This notice was distributed by \_\_\_\_\_

State Water System ID# \_\_\_\_\_ Date Distributed: \_\_\_\_\_

## APPENDIX D. SINGLE SOURCE FEASIBILITY STUDY



# *Source Water Protection Contingency Plan* **Municipal Water Works of Pineville** **PWSID 3305517**

**Wyoming County, West Virginia**  
**August 2015**

*“This program is being presented with financial assistance as a grant from the West Virginia Department of Health and Human Resources.”*



**THRASHER**

Title of Preparer:  
Project Engineer

---

Name of Contractor(s)/Consultant(s) (if used):  
The Thrasher Group, Inc.

---

I certify the information in the source water protection plan is complete and accurate to the best of my knowledge.

---

Signature of responsible party or designee authorized to sign for water utility:

---

Print Name of Authorizing Signatory (see instructions):

---

Title of Authorizing Signatory:

---

Date of Submission:  
09/30/2015

---

# **TABLE OF CONTENTS**

<b>EXECUTIVE SUMMARY .....</b>	<b>1</b>
<b>PURPOSE.....</b>	<b>2</b>
<b>BACKGROUND: WV SOURCE WATER ASSESSMENT AND PROTECTION PROGRAM .....</b>	<b>3</b>
<b>STATE REGULATORY REQUIREMENTS .....</b>	<b>4</b>
<b>SYSTEM INFORMATION .....</b>	<b>5</b>
Table 1 – Population Served by the Municipal Water Works of Pineville .....	6
<b>WATER TREATMENT AND STORAGE .....</b>	<b>6</b>
Table 2 – Municipal Water Works of Pineville Water Treatment Information .....	7
Table 3 –Municipal Water Works of Pineville Water Sources.....	8
Table 4 –Municipal Water Works of Pineville Groundwater Sources .....	8
<b>Response Networks and Communication .....</b>	<b>9</b>
Table 5 – Municipal Water Works of Pineville Water Shortage Response Capability .....	9
<b>Operation During Loss of Power .....</b>	<b>10</b>
Table 6 – Generator Capacity .....	10
<b>Future Water Supply Needs.....</b>	<b>11</b>
Table 7 – Future Water Supply Needs for the Municipal Water Works of Pineville .....	12
<b>Water Loss Calculation .....</b>	<b>12</b>
Table 8 – Water Loss Information.....	13
<b>EARLY WARNING MONITORING SYSTEM .....</b>	<b>14</b>
Table 9 – Early Warning Monitoring System Capabilities.....	15
<b>SINGLE SOURCE FEASIBILITY STUDY .....</b>	<b>16</b>
<b>CONCLUSION &amp; RECOMMENDATIONS .....</b>	<b>16</b>
<b>APPENDIX A – EARLY WARNING MONITORING SYSTEM FORMS .....</b>	<b>18</b>
<b>APPENDIX B – FEASIBILITY STUDY MATRIX.....</b>	<b>51</b>
<b>APPENDIX C – ANALYSIS OF ALTERNATIVES .....</b>	<b>53</b>
<b>APPENDIX D – SUPPORTING DOCUMENTATION .....</b>	<b>58</b>



## **EXECUTIVE SUMMARY**

This Source Water Protection Contingency Plan (SWPCP) is being developed for the Municipal Water Works of Pineville (MWWP), and is to be included as a portion of the complete Source Water Protection Plan being completed by other parties (per the West Virginia Bureau for Public Health).

The MWWP is a state regulated public utility and operates a public water system serving the areas of Pineville, Rock View, Mullensville, Ramey Addition, Glover, Rolling Hills, and Bear Hole. The MWWP serves 987 residential customers, 156 commercial customers, and 23 public authority customers. The MWWP does not provide water to nor purchase water from any other system.

The water treatment facility for the MWWP obtains surface water from two (2) raw water intakes – the Guyandotte River (Primary) and Pinnacle Creek (Backup). Both the Pinnacle Creek and Guyandotte River intakes have sufficient flow to independently satisfy the water demand. The plant has a treatment capacity of 1,000,000 gallons per day and pumps approximately twelve (12) hours per day producing an average of 454,000 gallons per day. The MWWP maintains six (6) treated water storage tanks totaling 1,200,000 gallons of treated water and does not retain any raw water storage. Currently, the water system is experiencing 50% unaccounted for water; however necessary repairs as well as leak detection monitoring are being conducted. The MWWP does not currently have a generator. Consequently, the treatment plant does not operate during power outages.

This SWPCP describes in detail the aforementioned aspects of the Municipal Water Works of Pineville water system, analyzes alternatives for sources of water supply, and compares alternatives in a feasibility matrix to determine the most suitable and feasible alternative for the utility. Based on the evaluation of the alternatives, the MWWP should continue to utilize the existing Pinnacle Creek intake in the event the primary water source is contaminated. It is recommended that the intake location for Pinnacle Creek be moved farther upstream to reduce the impact of the Guyandotte River during flood events. Additionally, it is recommended that an early warning monitoring system be installed upstream of the Guyandotte River intake to detect contaminants prior to compromising the treatment facility as well as the installation of a stationary generator to allow operation of the treatment plant during power loss. A brief description of all proposed alternatives is presented on the next page; also detailed alternative analysis, feasibility study, and supporting documentation are included in the Appendices of this report.

**Backup Intake**

Pinnacle Creek has adequate supply to provide the average water demand of the MWWP. Currently, the Pinnacle Creek intake could be susceptible to the back water of the Guyandotte River during a substantial flood event. As a consequence, the intake would need to be moved upstream for Pinnacle Creek to be an effective alternative water source. This alternative was analyzed in the feasibility analysis.

**Interconnection**

The MWWP is currently not interconnected with another utility. The Ravencliff-McGraws-Saulsville (RMS) Public Service District (PSD) is the nearest water system able to supply the MWWP average water demand. The MWWP water system is located approximately 5,000 feet from the RMS PSD system. An interconnection with RMS PSD was analyzed in the feasibility analysis.

**Treated Water Storage**

The MWWP currently has 1,200,000 gallons of treated water storage distributed between six (6) water storage tanks. Senate Bill 373 requires that each utility maintain two (2) days of storage based on the maximum amount of water produced. The maximum water production per day for the MWWP is 652,000 gallons, therefore 1,304,000 gallons of total treated water storage is required to comply with Senate Bill 373. The additional treated water storage was evaluated in the feasibility analysis.

**Raw Water Storage**

The MWWP does not maintain any raw water storage. To satisfy the two (2) day storage requirement described in Senate Bill 373, the utility needed 1,304,000 gallons of storage. The system did not meet the minimum required raw water storage capacity. The construction of a raw water storage tank was considered in the feasibility analysis.

**PURPOSE**

The goal of the West Virginia Bureau for Public Health (WVBPH) Source Water Assessment and Protection (SWAP) program is to prevent degradation of source waters which may preclude present and future uses of drinking water supplies to provide safe water in sufficient quantity to users. The most efficient way to accomplish this goal is to encourage and oversee source water protection on a local level. Every aspect of source water protection is best addressed by engaging local stakeholders.



The intent of this document is to describe what the MWWP has done, is currently doing, and plans to do to protect its source of drinking water. Although this water system treats the water to meet federal and state drinking water standards, conventional treatment does not fully eradicate all potential contaminants, and treatment that goes beyond conventional methods is often very expensive. By completing this plan, the MWWP acknowledges that implementing measures to prevent contamination can be a relatively economical way to help ensure the safety of the drinking water.

### **What are the benefits of preparing a Source Water Protection Plan?**

- Fulfills the requirement for the public water utilities to complete or update their source water protection plan.
- Identifies and prioritizes potential threats to the source of drinking water; and establishes strategies to minimize the threats.
- Plans for emergency responses to incidents that compromise the water supply by contamination or depletion, including how the public, state, and local agencies will be informed.
- Plans for future expansion and development, including establishing secondary sources of water.
- Ensures conditions to provide the safest and highest quality drinking water to customers at the lowest possible cost.
- Provides more opportunities for funding to improve infrastructure, purchase land in the protection area, and other improvements to the intake or source water protection areas.

### **BACKGROUND: WV SOURCE WATER ASSESSMENT AND PROTECTION PROGRAM**

Since 1974, the federal Safe Drinking Water Act (SDWA) has set minimum standards on the construction, operation, and quality of water provided by public water systems. In 1986, Congress amended the SDWA. A portion of those amendments was designed to protect the source water contribution areas around groundwater supply wells. This program eventually became known as the Wellhead Protection Program (WHPP). The purpose of the WHPP is to prevent pollution of the source water supplying the wells.

The Safe Drinking Water Act Amendments of 1996 expanded the concept of wellhead protection to include surface water sources under the umbrella term of “Source Water Protection”. The amendments encourage states to establish SWAP programs to protect all public drinking water supplies. As part of this initiative, states must explain how protection areas for each public water system will be delineated, how potential contaminant sources will be inventoried, and how susceptibility ratings will be established.

In 1999, the WVBPH published the West Virginia Source Water Assessment and Protection Program, which was endorsed by the United States Environmental Protection Agency. Over the next few years, WVBPH staff completed an assessment (i.e., delineation, inventory and susceptibility analysis) for all of West Virginia’s public water systems. Each public water system was sent a copy of its assessment report. Information regarding assessment reports for the Municipal Water Works of Pineville can be found in **Table 1**.

## **STATE REGULATORY REQUIREMENTS**

On June 6, 2014, §16.1.2 and §16.1.9a of the Code of West Virginia (1931) was reenacted and amended by adding three new sections designated §16.1.9c, §16.1.9d and §16.1.9e. The changes to the code outline specific requirements for public water utilities that draw water from a surface water source or a groundwater source influenced by surface water (GUIDI).

Under the amended and new codes, each existing public water utility using surface water or ground water influenced by surface water as a source must have completed or updated a source water protection plan by July 1, 2016, and must continue to update their plan every three years. Existing source water protection plans have been developed for many public water utilities in the past. If available, these plans were reviewed and considered in the development of this updated contingency plan. Any new water system established after July 1, 2016 must submit a source water protection plan before they begin operation. A new plan is also required when there is a significant change in the potential sources of significant contamination (PSSC) within the zone of critical concern (ZCC).

The code also requires that public water utilities include details regarding PSSCs, protection measures, system capacities, contingency plans, and communication plans. Before a plan can be approved, the local health department and public will be invited to contribute information for

consideration. In some instances, public water utilities may be asked to conduct independent studies of the source water protection area and specific threats to gain additional information.

## **SYSTEM INFORMATION**

The Municipal Water Works of Pineville is classified as a state regulated public utility and operates a public water system serving areas of Wyoming County. A public water system is defined as:

“Any water supply or system which regularly supplies or offers to supply water for human consumption through pipes or other constructed conveyance, if serving at least an average of twenty-five individuals per day for at least sixty days per year, or which has at least fifteen service connections, and shall include:

- i. Any collection, treatment, storage and distribution facilities under the control of the owner or operator of the system and used primarily in connection with the system
- ii. Any collection or pretreatment storage facilities not under such control which are used primarily in connection with the system.”

A public water utility is defined as, “any public water system which is regulated by the West Virginia Public Service Commission.”

For purposes of this source water protection plan, public water systems are also referred to as public water utilities. Information on the population served by this utility is presented in **Table 1** on the following page.

**Table 1 – Population Served by Municipal Water Works of Pineville**

<b>Administrative office location:</b>		P.O. Box 220 Pineville, WV 24874	
<b>Is the system a public utility, according to the Public Service Commission rule?</b>		Yes	
<b>Date of Most Recent Source Water Assessment Report:</b>		June 2009	
<b>Date of Most Recent Source Water Protection Plan:</b>		April 2011	
<b>Population served directly:</b>		Residential 987 Commercial 156 Public Authorities 23	<b>Total 1,166</b>
<b>Bulk Water Purchaser Systems:</b>	<b>System Name</b>	<b>PWSID Number</b>	<b>Population</b>
	N/A	–	–
	N/A	–	–
<b>Total Population Served by the Utility:</b>		2,845	
<b>Does the utility have multiple source water protection areas (SWPAs)?</b>		Yes	
<b>How many SWPAs does the utility have?</b>		2	

## WATER TREATMENT AND STORAGE

As required, the Municipal Water Works of Pineville has assessed their system (e.g., treatment capacity, storage capacity, unaccounted for water, contingency plans) to evaluate their ability to provide drinking water and protect public health.

**Table 2** contains information on the water treatment methods and capacity of the utility. Information about the surface water sources from which the MWWP draws water can be found in **Table 3**. If the utility draws water from any groundwater sources to blend with the surface water, the information about these ground water sources can be found in **Table 4**.

**Table 2 – Municipal Water Works of Pineville Water Treatment Information**

<b>Water Treatment Process (List in order)</b>	<p>Raw Water Intake ↓ Settling Basin ↓ Filters ↓ Post Chlorination ↓ Clear Well ↓ High Service Pumps</p>
<b>Current Treatment Capacity (gal/day)</b>	1,000,000
<b>Current Average Production (gal/day)</b>	454,000
<b>Maximum Quantity Treated and Produced (gal/day)</b>	652,000
<b>Minimum Quantity Treated and Produced (gal/day)</b>	318,000
<b>Average Hours of Operation in One Day</b>	12
<b>Maximum Hours of Operation in One Day</b>	24
<b>Minimum Hours of Operation in One Day</b>	8
<b>Number of Storage Tanks Maintained</b>	6
<b>Total Gallons of Treated Water Storage (gal)</b>	1,200,000
<b>Total Gallons of Raw Water Storage (gal)</b>	0

**Table 3 –Municipal Water Works of Pineville Water Sources**

<b>Intake Name</b>	<b>SDWIS #</b>	<b>Local Name</b>	<b>Describe Intake</b>	<b>Name of Water Source</b>	<b>Date Constructed/ Modified</b>	<b>Frequency of Use (Primary/ Backup/ Emergency)</b>	<b>Activity Status (Active/ Inactive)</b>
Guyandotte River	–	Guyandotte River	Screened Pipe	Guyandotte River	1960's	Primary	Active
Pinnacle Creek	–	Pinnacle Creek	Screened Pipe	Pinnacle Creek	1990's	Backup	Active

**Table 4 –Municipal Water Works of Pineville Groundwater Sources**

<b>Does the utility blend with groundwater?</b>	No
---	----

*(C) – Constructed*

*(M) - Modified*

## Response Networks and Communication

Statewide initiatives for emergency response, including source water related incidents, are being developed. These include the West Virginia Water/Wastewater Agency Response Network (WV WARN, see <http://www.wvwarn.org/>) and the Rural Water Association Emergency Response Team (see <http://www.wvrwa.org/>). The MWWP has analyzed its ability to effectively respond to emergencies and this information is provided in **Table 5**.

**Table 5 – Municipal Water Works of Pineville Water Shortage Response Capability**

<b>Can the utility isolate or divert contamination from the intake or groundwater supply?</b>	No
<b>Describe the utility's capability to isolate or divert potential contaminants:</b>	N/A
<b>Can the utility switch to an alternative water source or intake that can supply full capacity at any time?</b>	Yes
<b>Describe in detail the utility's capability to switch to an alternative source:</b>	The MWWP can switch to Pinnacle Creek by opening a gate valve on Pinnacle Creek intake and closing gate valve on primary intake.
<b>Can the utility close the water intake to prevent contamination from entering the water supply?</b>	Yes
<b>How long can the intake stay closed?</b>	The intake can stay closed as long as Pinnacle Creek can supply water. (See Note Below)
<b>Describe the process to close the intake:</b>	Closing gate valves.
<b>Describe the treated water storage capacity of the water system:</b>	The MWWP has six (6) storage tanks totaling 1,200,000 gallons of treated water storage.
<b>Is the utility a member of WVRWA Emergency Response Team?</b>	Yes
<b>Is the utility a member of WV-WARN?</b>	Yes
<b>List any other mutual aid agreements to provide or receive assistance in the event of an emergency:</b>	No

Note: In the event the primary source is contaminated, it is recommended that the Utility evaluate the water storage on hand at that time and determine that the alternative source is sufficient to sustain the water system for the duration of shutdown.

## Operation During Loss of Power

This utility analyzed and examined its ability to operate effectively during a loss of power. This involved ensuring a means to supply water through treatment, storage, and distribution without creating a public health emergency. Information regarding the utility's capacity for operation during power outages is shown in **Table 6**. The utility's standby capacity would have the capability to provide power to the system as if normal power conditions existed. The utility's emergency capacity would have the capability to provide power to only the essential equipment and treatment processes to provide water to the system. Information regarding the emergency generator capacity for each utility was calculated by the WV BPH and can be found in **Appendix D**

**Table 6 – Generator Capacity**

<b>What is the type and capacity of the generator needed to operate during a loss of power?</b>	Stationary 150 kW generator with a 260A automatic transfer switch	
<b>Can the utility connect to generator at intake/wellhead? If yes, select a scenario that best describes system.</b>	No; the generator would need to be able to connect to an emergency quick connect power connection to provide power service.	
<b>Can the utility connect to generator at treatment facility? If yes, select a scenario that best describes system.</b>	No; the generator would need to be able to connect to an emergency quick connect power connection to provide power service.	
<b>Can the utility connect to a generator in distribution system? If yes, select a scenario that best describes system.</b>	No; the system would require an upgrade for quick connect power connections to provide power service.	
<b>Does the utility have adequate fuel on hand for the generator?</b>	No	
<b>What is your on-hand fuel storage and how long will it last operating at full capacity?</b>	<b>Gallons</b>	<b>Hours</b>
	—	—



**Table 6 – Generator Capacity (Continued)**

Provide a list of suppliers that could provide generators and fuel in the event of an emergency:		Supplier	Contact Name	Phone Number
	Generator	Caterpillar	Walker-CAT	(304) 949-6400
	Generator	Cummins	Crosspoint	(304) 769-1012
	Fuel	RT Rogers		(304) 466-1733
	Fuel			
Does the utility test the generator(s) periodically?		N/A		
Does the utility routinely maintain the generator?		N/A		
If no scenario describing the ability to connect to generator matches the utility's system or if utility does not have ability to connect to a generator, describe plans to respond to power outages:		During a power outage the utility does not have a backup source of power. The utility has inquired about procuring emergency generators for the pump station and treatment facility.		

If a portable generator is available through the respective county's 911 or Emergency Center, it is assumed the generator is available **only** for the utility for which this source water protection contingency plan is prepared. If more than one utility in the county uses the portable generator during power outages, it is suggested that each utility procure a generator specifically to protect their system during a power outage.

### **Future Water Supply Needs**

When planning for potential emergencies and developing contingency plans, a utility needs to not only consider their current demands for treated water but also account for likely future needs. This could mean expanding current intake sources or developing new ones in the near future. This can be an expensive and time consuming process, and any water utility should take this into account when determining emergency preparedness. The MWWP has analyzed its ability to meet future water demands at current capacity and this information is included in **Table 7**.

**Table 7 – Future Water Supply Needs for Municipal Water Works of Pineville**

<b>Is the utility able to meet water demands with the current production capacity over the next 5 years? If so, explain how you plan to do so.</b>	The MWWP can meet the demands with current production. The US Census data show a slow decline in the population in Pineville, WV and Wyoming County and no extensions are proposed at this time.
<b>If not, describe the circumstances and plans to increase production capacity:</b>	N/A

### **Water Loss Calculation**

In any public water system, there is a certain percentage of the total treated water that does not reach the customer distribution system. Some of this water is used in treatment plant processes such as backwashing filters or flushing piping, but there is usually at least a small percentage unaccounted. To measure and report on this unaccounted for water, a public utility must use the same method used in the Public Service Commission's rule, *Rules for the Government of Water Utilities*, 150CSR7, Section 5.6. The rule defines unaccounted for water as "the volume of water introduced into the distribution system less all metered usage and all known non-metered usage which can be estimated with reasonable accuracy."

To further clarify, metered usages are most often those that are distributed to customers. Non-metered usages estimated include water used by fire departments for fires or training, un-metered bulk sales, flushing to maintain the distribution system, backwashing filters, and cleaning settling basins. By totaling the metered and non-metered uses, the utility calculates unaccounted for water. Note: To complete annual reports submitted to the PSC, utilities typically account for known water main breaks by estimating the amount of water lost. However, for the purposes of the source water protection plan, any water lost due to leaks – even if the system is aware of how much water is lost at a main break – is not considered a use. Water lost through leaks and main breaks cannot be controlled during water

shortages or other emergencies and should be included in the calculation of percentage of water loss for purposes of the source water protection plan. The data in **Table 8** is taken from the most recently submitted Municipal Water Works of Pineville PSC Annual Report.

**Table 8 – Water Loss Information**

<b>Total Water Pumped (gal)</b>		165,944,000
<b>Total Water Purchased (gal)</b>		0
<b>Total Water Pumped and Purchased (gal)</b>		165,944,000
<b>Water Loss Accounted for Except Main Leaks (gal)</b>	<b>Mains, Plants, Filters, Flushing, etc.</b>	0
	<b>Fire Department</b>	0
	<b>Back Washing</b>	29,400,000
	<b>Blowing Settling Basins</b>	0
<b>Total Water Loss Accounted For Except Main Leaks</b>		29,400,000
<b>Water Sold- Total Gallons (gal)</b>		53,045,000
<b>Unaccounted For Lost Water (gal)</b>		83,499,000
<b>Water lost from main leaks (gal)</b>		0
<b>Total gallons of Unaccounted for Lost Water and Water Lost from Main Leaks (gal)</b>		83,499,000
<b>Total Percent Unaccounted For Water and Water Lost from Main Leaks (%)</b>		<b>50%</b>
<b>If total percentage of Unaccounted for Water is greater than 15%, please describe any measures that could be taken to correct this problem:</b>		Increase inspections and replacement of older lines is being conducted.

## EARLY WARNING MONITORING SYSTEM

Public water utilities are required to provide an examination of the technical and economic feasibility of implementing an early warning monitoring system. Implementing an early warning monitoring system may be approached in different ways depending upon the water utility's resources and threats to the source water. A utility may install a continuous monitoring system that will provide real-time information regarding water quality conditions. This would require utilities to analyze the data in order to establish what condition is indicative of a contamination event. Continuous monitoring will provide results for a predetermined set of parameters. The more parameters being monitored, the more sophisticated the monitoring equipment will be. When establishing a continuous monitoring system, the utility should consider the logistics of placing and maintaining the equipment and receiving output data from the equipment.

Alternately, or in addition, a utility may also pull periodic grab samples on a regular basis or in case of a reported incident. The grab samples may be analyzed for specific contaminants. A utility should examine their PSSCs to determine what chemical contaminants could pose a threat to the water source. If possible, the utility should plan in advance how those contaminants will be detected. Consideration should be given for where samples will be collected, the preservations and hold times for samples, available laboratories to analyze samples, and costs associated with the sampling event. Regardless of the type of monitoring (continuous or grab), utilities should collect samples for their source throughout the year to better understand the baseline water quality conditions and natural seasonal fluctuations. Having a baseline will help determine if changes in the water quality are indicative of a contamination event and inform the needed response.

Every utility should establish a system or process for receiving or detecting chemical threats with sufficient time to respond to protect the treatment facility and public health. All approaches to receiving and responding to an early warning should incorporate communication with facility owners and operators that pose a threat to the water quality, state and local emergency response agencies, surrounding water utilities, and the public. Communication plays an important role in knowing how to interpret data and how to respond.

The MWWP has analyzed its ability to monitor for and detect potential contaminants that could impact its source water. Information regarding this utility's early warning monitoring system capabilities can be found in **Table 9** on the following page and in **Appendix A**

**Table 9 – Early Warning Monitoring System Capabilities**

<b>Does your system currently receive spill notifications from a state agency, neighboring water system, local emergency responders, or other facilities? If yes, from whom do you receive notices?</b>		Yes; The utility receives spill notifications from the WV Health Department.	
<b>Are you aware of any facilities, land uses, or critical areas within your protection areas where chemical contaminants could be released or spilled?</b>		No	
<b>Are you prepared to detect potential contaminants if notified of a spill?</b>		Yes	
<b>List laboratories (and contact information) on which you would rely to analyze water samples in case of a reported spill.</b>	<b>Laboratories</b>		
	<b>Name</b>		<b>Contact</b>
	REI Consultants		(304) 255-2500
	WV Office of Lab Services		(304) 558-3530
<b>Do you have an understanding of baseline or normal conditions for your source water quality that accounts for seasonal fluctuations?</b>		Yes	
<b>Does your utility currently monitor raw water (through continuous monitoring or periodic grab samples) at the surface water intake or from a groundwater source on a regular basis?</b>		No	
<b>Provide or estimate the capital and O&amp;M costs for your current or proposed early warning system or upgraded system.</b>	<b>Capital</b>	\$ 50,000	
	<b>Yearly O&amp;M</b>	\$ 750	
<b>Do you serve more than 100,000 customers? If so, please describe the methods you use to monitor at the same technical levels utilized by ORSANCO.</b>		No	
<b>Note: Complete appropriate Early Warning Monitoring form for your system in Appendix A (Line 71). WVAWC can expedite water testing.</b>			

## **SINGLE SOURCE FEASIBILITY STUDY**

If a public water utility's water supply plant is served by a single-source intake to a surface water source of supply or a surface water influenced source of supply, the submitted source water protection plan must also include an examination and analysis of the technical and economic feasibility of alternative sources of water to provide continued safe and reliable public water service in the event its primary source of supply is detrimentally affected by contamination, release, spill event or other reason. These alternatives may include a secondary intake, two days of raw or treated water storage, interconnections with neighboring systems, or other options identified on a local level. Note: a secondary intake would draw water supply from a substantially different location or water source.

In order to accomplish this requirement, utilities should examine all existing or possible alternatives and rank them by their technical, economic, and environmental feasibility. In order to have a consistent method for ranking alternatives, WV BPH has developed a feasibility study guide. This guide provides several criteria to consider for each category, organized in a scoring matrix. By completing the Feasibility Study, utilities will demonstrate the process used to examine the feasibility of each alternative. The Feasibility Study matrix is attached as **Appendix B**. Those alternatives that are ranked highest and deemed to be most feasible will then be the subject of a second, more in-depth, study to analyze the comparative costs, risks, and benefits of implementing each of the described alternatives. An alternatives analysis report providing these details is attached as **Appendix C**.

## **CONCLUSION & RECOMMENDATIONS**

This report represents a detailed explanation of the required elements of the Municipal Water Works of Pineville's Source Water Protection Plan. Any supporting documentation or other materials that the utility considers relevant to their plan can be found in **Appendix D**.

This source water protection plan is intended to help prepare community public water systems all over West Virginia to properly handle any emergencies that might compromise the quality of the system's source water supply. It is imperative that this plan is updated as often as necessary to reflect the changing circumstances within the water system. The protection team should continue to meet regularly and continue to engage the public whenever possible. Communities taking local responsibility for the quality of their source water are the most effective way to prevent contamination and protect a water system against contaminated drinking water. Community cooperation, sufficient

preparation, and accurate monitoring are all critical components of this source water protection plan, and a multi-faceted approach is the only way to ensure that a system is as protected as possible against source water degradation.

Based on the evaluation of the existing water system, it is recommended that the MWWP install an early warning monitoring system upstream of the intake along the Guyandotte River, Pinnacle Creek and install a stationary generator to allow intake to pump and operation of the treatment plant during loss of power . The early warning monitors shall reduce or eliminate impact to the water system by detecting potential contaminants in the primary surface water source before they reach the intake. The size of the stationary generator was based upon the following assumptions: three (3) phase power was needed, 480V power service, additional kW would be needed for miscellaneous power such as lighting and heaters, and the connection of the current controls to an automatic transfer switch. As shown in the Feasibility Matrix in **Appendix B**, the existing Pinnacle Creek intake is the most feasible alternative succeeding relocation 800 feet upstream to reduce susceptibility of infection by the Guyandotte River during flooding.

### **RECOMMENDED ALTERNATIVE COST ESTIMATE**

<b>Qty.</b>		<b>Description</b>	<b>Unit Price</b>	<b>Total Cost</b>
1	LS	Relocate Backup Intake Upstream	\$46,375	\$46,375
1	LS	150 kW Stationary Generator	\$35,208	\$35,208
2	LS	Early Warning Detection Equipment	\$50,000	\$100,000
1	LS	Operation & Maintenance for Early Warning System	\$750	\$750
<b>TOTAL</b>				<b>\$182,333</b>

**ASSUMPTIONS:** *The early warning detection equipment, as well as operation and maintenance, will be as described in **Appendix A**. The stationary 100 kW emergency generator would have the capability to provide power service to the raw water intake and treatment facility.*

## **APPENDIX A – EARLY WARNING MONITORING SYSTEM FORMS**



**Select and Attach the Appropriate Form for Your System.**

**Form A** – Complete if you currently have an early warning monitoring system installed for a surface water source

**Form B** – If you do not currently have an early warning monitoring system installed for a surface water intake or are planning to upgrade or replace your current system, complete this form.

**Form C** – Complete if you currently have an early warning monitoring system for a groundwater source.

**Form D** – If you do not currently have an early warning monitoring system installed for a groundwater source or are planning to upgrade or replace your current system, complete this form.

**Note: You may need to fill out and attach more than one form to your Protection Plan, depending on your current situation.**

## Appendix A - Form B

### Proposed Early Warning Monitoring System Worksheet- Surface

<b>Describe the type of early warning detection equipment that could be installed, including the design.</b>
The early warning detection equipment that could be installed includes a level controller, display module, back panel, level & trough (see cost estimate by Hach Company in Appendix D) along with conductivity, oil-in-water, ORP, and pH sensors.
<b>Where would the equipment be located?</b>
Early warning monitoring systems would be located on the raw water intake line where the Guyandotte River surface water would enter the laboratory in the water treatment facility.
<b>What would the maintenance plan for the monitoring equipment entail?</b>
The proposed maintenance plan for the monitoring equipment shall consist of annual cleaning and/or exchanging of the probe(s) for the controller. Periodic calibration of the unit may also be required.
<b>Describe the proposed sampling plan at the monitoring site.</b>
Sampling of water quality data occurs every minute. The MWWP water system would need to retrieve data from the “History” of the controller data collector one or two times per month.
<b>Describe the proposed procedures for data management and analysis.</b>
Data management for the early warning monitoring system consists of data points (up to 500 points or approximately six months per probe) being recorded in the “History” of the controller data collector. To access the “History”, the probe has to be plugged into the controller. Data is able to be removed via USB or through a local SCADA system.

*Literature related to the development and design of early warning systems is provided on the following pages courtesy of the American Water Works Association.*

## **APPENDIX B – FEASIBILITY STUDY MATRIX**

## Feasibility Matrix

Municipal Water Works of Pineville

PWSID: WV 3305517

Date: August 2015

Completed By: Project Engineer - The Thrasher Group, Inc.

Alternative Strategy Description	Economic Criteria					Technical Criteria							Environmental Criteria						Final Score	Total Capital Cost	Comments
	Operation & Maintenance Costs	Capital Costs	Total	Total %	Weighted Total	Permitting	Flexibility	Resilience	Institutional Requirements	Total	Total %	Weighted Total	Environmental Impacts	Aesthetic Impacts	Stakeholder Issues	Total	Total %	Weighted Total			
Backup Intake	3.0	3.0	6.0	100.0%	40.0%	3.0	3.0	3.0	3.0	12.0	100.0%	40.0%	3.0	3.0	3.0	9.0	100.0%	20.0%	100.0%	\$46,375	No comment
Interconnect	3.0	2.3	5.3	88.9%	35.6%	3.0	3.0	3.0	3.0	12.0	100.0%	40.0%	3.0	3.0	3.0	9.0	100.0%	20.0%	95.6%	\$1,063,238	No comment
Treated Water Storage	3.0	2.3	5.3	88.9%	35.6%	3.0	2.5	2.7	3.0	11.2	93.1%	37.2%	3.0	3.0	3.0	9.0	100.0%	20.0%	92.8%	\$403,625.00	No comment
Raw Water Storage	3.0	2.3	5.3	88.9%	35.6%	3.0	2.5	2.7	3.0	11.2	93.1%	37.2%	3.0	3.0	3.0	9.0	100.0%	20.0%	92.8%	\$1,340,250	No comment
Other (Specify)	0.0	0.0	0.0	0.0%	0.0%	0.0	0.0	0.0	0.0	0.0	0.0%	0.0%	0.0	0.0	0.0	0.0	0.0%	0.0%	0.0%	\$0.00	No comment

## Scoring:

- 0 - Not feasible. Criterion cannot be met by this alternative and removes the alternative from further consideration.
- 1 - Feasible but difficult. Criterion represents a significant barrier to successful implementation but does not eliminate it from consideration.
- 2 - Feasible. Criterion can be met by the alternative.
- 3 - Very Feasible. Criterion can be easily met by the alternative.

## **APPENDIX C – ANALYSIS OF ALTERNATIVES**

## **ANALYSIS OF ALTERNATIVES**

In the event the primary water source is contaminated, the Municipal Water Works of Pineville has an existing alternative source in place capable of fully sustaining the current water production for a prolonged period of contamination. This alternative was evaluated with three (3) other alternatives described below.

### **1. Backup Intake**

The utility draws water from two surface water intakes – a primary intake on the Guyandotte River and a secondary intake on Pinnacle Creek. Currently, the Pinnacle Creek intake is at risk to be degraded by the Guyandotte River's back water if contamination were to occur concurrent with flooding.

Thus, the relocation of the Pinnacle Creek backup intake approximately 800 feet upstream including 800 feet of 8" intake line was considered during the feasibility analysis.

### **2. Interconnection**

The MWWP is not currently interconnected to another utility. The consideration of an alternative source of water could be determined using Ravenscliff-McGraws-Saulsville Public Service District. The PSD currently produces 400,000 gallons of water per day for customer demand. RMS PSD's existing water treatment plant has the capacity to produce 1,000,000 gallons of water per day. Considering Pineville's current average water demand of 340,000 gallons per day, the total amount of water treated by the RMS PSD facility would be:

$$400,000 \text{ GPD} + 340,000 \text{ GPD} = 740,000 \text{ GPD}$$

The total treated amount of 740,000 gallons per day is below the treatment capacity of 1,000,000 gallons per day. Therefore the RMS PSD is a reliable alternative water source for the MWWP. The end of the MWWP system is located approximately 5,000 feet from a line of the RMS PSD. Accordingly, an interconnection with the RMS PSD system was considered during the feasibility analysis.

### **3. Treated Water Storage**

The MWWP current treated water storage capacity consists of six (6) water storage tanks totaling 1,200,000 gallons of treated water. The MWWP's peak production over the past year was 652,000 gallons per day of water. Per Senate Bill 373, the minimum required treated storage capacity is two (2) days of storage at peak production.

The minimum required treated water storage capacity for the system would be:

$$652,000 \text{ gallons per day} \times 2 \text{ days} = 1,304,000 \text{ gallons}$$

Therefore, the system currently does not meet the minimum required treated water storage capacity. The remaining required treated water storage capacity for the system would be:

$$1,304,000 \text{ gallons} - 1,200,000 \text{ gallons} = 104,000 \text{ gallons}$$

Thus, the construction of a 105,000 gallon treated water storage tank was considered during the feasibility analysis.

### **4. Raw Water Storage**

As mentioned above, to satisfy the two (2) day storage described in Senate Bill 373, the utility needed 200,000 gallons of storage. The MWWP currently retains no raw water storage. Consequently, the construction of a 1,453,000 gallon raw water storage tank was considered during the feasibility analysis.

Feasibility Matrix		Municipal Water Works of Pineville		PWSID: WV 3305517		Date: August 2015		Completed By: Project Engineer - The Thrasher Group, Inc.			
Criteria	Question	Backup Intake	Feasibility	Interconnect	Feasibility	Treated Water Storage	Feasibility	Raw Water Storage	Feasibility	Other (Specify)	Feasibility
Economic Criteria											
What is the total current budget year cost to operate and maintain the PWSU (current budget year)?		\$503,214.00		\$503,214.00		\$503,214.00		\$503,214.00		\$503,214.00	
O and M Costs	Describe the major O&M cost requirements for the alternative?	Labor, Power, Materials for maintenance	3	Labor, Power, Materials for maintenance	3	Labor, Power, Materials for maintenance	3	Labor, Materials for maintenance	3		0
	What is the incremental cost (\$/gal) to operate and maintain the alternative?	\$0.00	3	\$0.00	3	\$0.00	3	\$0.00	3	\$0.00	0
	Cost comparison of the incremental O&M cost to the current budgeted costs (%)	0.00%	3	0.00%	3	0.00%	3	0.00%	3	0.00%	0
O and M-Feasibility Score			3.0		3.0		3.0		3.0		0.0
Describe the capital improvements required to implement the alternative.		Relocation of secondary intake upstream, including 800 LF intake line.		An interconnection with RMS, including a booster station, water line and all related appurtenances.		Construction of a new 105,000 gallon treated water storage tank.		Construction of a new 1,453,000 gallon raw water storage tank.			
Capital Costs	What is the total capital cost for the alternative?	\$46,375.00	3	\$1,063,238.00	2	\$403,625.00	2	\$1,340,250.00	2	\$0.00	0
	What is the annualized capital cost to implement the alternative, including land and easement costs, convenience tap fees, etc. (\$/gal)	\$0.00	3	\$0.01	3	\$0.00	3	\$0.01	3	\$0.00	0
	Cost comparison of the alternatives annualized capital cost to the current budgeted costs (%)	0.00%	3	0.00%	2	0.00%	2	0.00%	2	0.00%	0
Capital Cost-Feasibility Score			3.0		2.3		2.3		2.3		0.0
Technical Criteria											
Permitting	Provide a listing of the expected permits required and the permitting agencies involved in their approval.	ACOE, USFW, WVDNR, WVDEP, WVSHPO, WVDOT, County Floodplain	3	ACOE, USFW, WVDNR, WVDEP, WVSHPO, WVDOT, County Floodplain	3	ACOE, USFW, WVDNR, WVDEP, WVSHPO, WVDOT, County Floodplain	3	ACOE, USFW, WVDNR, WVDEP, WVSHPO, WVDOT, County Floodplain	3		0
	What is the timeframe for permit approval for each permit?	ACOE (90 days), USFW (60 days), WV DNR (60 days), WV DEP (90 days), WVSHPO (60 Days), WVDOT (90 days), County Floodplain (90 days)	3	ACOE (90 days), USFW (60 days), WV DNR (60 days), WV DEP (90 days), WVSHPO (60 Days), WVDOT (90 days), County Floodplain (90 days)	3	ACOE (90 days), USFW (60 days), WV DNR (60 days), WV DEP (90 days), WVSHPO (60 Days), WVDOT (90 days), County Floodplain (90 days)	3	ACOE (90 days), USFW (60 days), WV DNR (60 days), WV DEP (90 days), WVSHPO (60 Days), WVDOT (90 days), County Floodplain (90 days)	3		0
	Describe the major requirements in obtaining the permits (environmental impact studies, public hearings, etc.)	Environmental impact studies. water sampling	3	Environmental impact studies	3	Environmental impact studies	3	Environmental impact studies	3		0
	What is the likelihood of successfully obtaining the permits?	Good	3	Good	3	Good	3	Very Good	3		0
	Does the implementation of the alternative require regulatory exceptions or variances?	No	3	No	3	No	3	No	3		0
Permitting-Feasibility Score			3.0		3.0		3.0		3.0		0.0
Flexibility	Will the alternative be needed on a regular basis or only used intermittently?	Permanently	3	Intermittently, but can be used permanently	3	Intermittently	2	Intermittently	2		0
	How will implementing the alternative affect the PWSU's current method of treating and delivering potable water including meeting Safe Drinking Water Act regulations? (ex. In the case of storage, will the alternative increase the likelihood of disinfection byproducts?)	No Impact	3	Current treatment methods will not be required	3	No Impact	3	No Impact	3		0
Flexibility-Feasibility Score			3.0		3.0		2.5		2.5		0.0
Resilience	Will the alternative provide any advantages or disadvantages to meeting seasonal changes in demand?	Yes	3	Yes	3	Yes	3	Yes	3		0
	How resistant will the alternative be to extreme weather conditions such as drought and flooding?	Drought may limit the availability of water.	3	Drought may limit availability of water	3	No Impact	3	No Impact	3		0
	Will the alternative be expandable to meet the growing needs of the service area?	Yes	3	Yes	3	Limited	2	Limited	2		0
Resilience-Feasibility Score			3.0		3.0		2.7		2.7		0.0
Institutional Requirements	Identify any agreements or other legal instruments with governmental entities, private institutions or other PWSU required to implement the alternative.	None	3	Ravencliff-McGraws-SaulsvillePublic Service District	3	None	3	None	3		0
	Are any development/planning restrictions in place that can act as a barrier to the implementation of the alternative.	No	3	No	3	No	3	No	3		0
	Identify potential land acquisitions and easements requirements.	Property Acquisition for pump station and easements for waterline	3	Property Acquisition for pump station and easements for waterline	3	Property Acquisition required for tank	3	Property Acquisition required for tank	3		0
Institutional Requirements-Feasibility Score			3.0		3.0		3.0		3.0		0.0
Environmental Criteria											
Environmental Impacts	Identify any environmentally protected areas or habitats that might be impacted by the alternative.	None	3	None	3	None	3	None	3		0
Environmental Impacts-Feasibility Score			3.0		3.0		3.0		3.0		0.0
Aesthetic Impacts	Identify any visual or noise issues caused by the alternative that may affect local land uses?	Fencing and control panel for pump station	3	Fencing and control panel for pump station	3	Water tank on hill	3	Water tank on hill	3		0
	Identify any mitigation measures that will be required to address aesthetic impacts?	Clearance from Culture and History and Local Zoning Commission will be obtained	3	Clearance from Culture and History and Local Zoning Commission will be obtained	3	Clearance from Culture and History and Local Zoning Commission will be obtained	3	Clearance from Culture and History and Local Zoning Commission will be obtained	3		0
Aesthetic Impacts-Feasibility Score			3.0		3.0		3.0		3.0		0.0
Stakeholder Issues	Identify the potential stakeholders affected by the alternative.	Water Customers	3	Water Customers	3	Water Customers	3	Water Customers	3		0
	Identify the potential issues with stakeholders for and against the alternative.	Rate Increase may be needed to implement construction	3	Rate Increase may be needed to implement construction	3	Rate Increase may be needed to implement construction	3	Rate Increase may be needed to implement construction	3		0
	Will stakeholder concerns represent a significant barrier to implementation (or assistance) of the alternative?	No	3	No	3	No	3	No	3		0
Stakeholder Issues-Feasibility Score			3.0		3.0		3.0		3.0		0.0
Comments		The Pinnacle Intake will provide 100% backup to the primary water source.		This alternative will provide 100% backup to the primary water source. A majority of construction will take place along State or Town rights-of-way		This alternative will provide temporary backup meeting the two (2) day requirement stated in Senate Bill 373.		This alternative will provide temporary backup meeting the two (2) day requirement stated in Senate Bill 373.			



## Matrix Explanation

The alternative analysis matrix evaluates the utility's ability to implement each of the additional sources outlined. Alternative sources are evaluated for economic, technical and environmental feasibility. The matrix uses a 0-3 rating system, with 3 being very feasible and 0 being not feasible. Each category has sub questions to develop an average for the alternative. Once all areas are evaluated, a final feasibility score is given for each of the alternatives for use in determining which option will best suit the utility's needs.

Economic factors evaluated in the matrix include all information needed to fund the alternative source. The matrix considers the current utility budget available per the latest (2014) annual report, operation and maintenance costs for each alternative, and the capital needed to construct each alternative. Supporting documentation is included in **Appendix D** of the report which provides a breakdown of costs for each alternative that are used as capital costs in the matrix. The economic feasibility of each alternative are compared on a cost per gallon ratio. This ratio is determined by dividing the capital cost of the improvements by the total number of gallons of water produced per year. An average of the economic feasibility factors is then calculated and entered into the overall feasibility matrix found in **Appendix B**.

Technical criteria evaluated include permitting, flexibility, institutional and resilience factors. Permitting costs are included in all supporting documentation for each alternative source. The permitting factors included the permits that would be needed to construct the alternative source for the utility. . An additional environmental factor is the feasibility of obtaining each permit. Permits were rated from 3 to 0 based on the difficulty of obtaining the permits for the project. Depending on the project area, some permits may be very difficult and costly to obtain. Flexibility factors evaluate the ability of the alternative to be used as a permanent source of water or if it can only be used on a temporary basis.. The intake and interconnections can be used as both temporary and permanent sources. The alternatives' ability to help the utility during seasonal or population increases is also evaluated in the resilience factors. The alternatives that can produce additional water were rated as 3, or very feasible. Additional criteria evaluated are easements and right of ways that will need to be acquired to construct the alternative source. For interconnections and intakes right of way would be needed to lay the new waterline. The feasibility of attaining the right of way was evaluated. All technical criteria was averaged and also entered into the feasibility summary in **Appendix B**.

Environmental aspects for each alternative include impacts, aesthetics and stakeholders. Environmental impacts included any areas in the proposed alternative source area that are protected. Areas that are protected would have a low feasibility because the impacts could be large if the project were constructed. Aesthetics factors were noise, visual impacts and mitigation measures that could affect the projects feasibility. The aesthetic factors relate to the stakeholders factors. The stakeholders' portion of the environmental criteria involves the community and their acceptance of the new source alternative and the structures that will be constructed.

## **APPENDIX D – SUPPORTING DOCUMENTATION**

### EARLY WARNING MONITORING COST ESTIMATE

Qty.		Description	Unit Price	Total Cost
1	EA	Back Panel / Trough / Level (required)	\$4,350.00	\$ 4,350
1	EA	Probe Module SC1000 (6 sensors)	\$ 1,344.00	\$ 1,344
1	EA	Internal Card SC1000 (4 mA inputs)	\$ 879.00	\$879
1	EA	Display Module SC1000	\$ 2,770.00	\$ 2,770
1	EA	Conductivity Sensor	\$ 860.00	\$860
1	EA	FP360 SC Sensor, 500 ppb, SS, 1.5 m Cable	\$ 17,480.00	\$ 17,480
1	EA	ORP Sensor	\$ 880.00	\$ 880
1	EA	pH Sensor, Rytton	\$ 800.00	\$ 800
1	LS	Installation	\$ 20,637.00	\$ 20,637
			<b>TOTAL=</b>	<b>\$ 50,000</b>

### OPERATION & MAINTENATNCE COST ESTIMATE

Qty.		Description	Unit Price	Total Cost
1	LS	Annual O&M Cost	\$750.00	\$ 750
			<b>TOTAL=</b>	<b>\$ 750</b>

*In addition to the early warning system, Municipal Water Works of Pineville should establish a baseline water quality for their sources*

GPM of Existing Pump \_\_\_\_\_ GPM

Piping Size	Cost per Foot	Footage	Totals
6" Pipe	\$ 34.00		\$ -
8" Pipe	\$ 37.00	800	\$ 29,600.00
12" Pipe	\$ 60.00		\$ -
			<b>\$ 29,600.00</b>

Additional Environmental Costs		
Mussel Survey	No	\$ -
Permits	Yes	\$ 7,500.00
		<b>\$ 7,500.00</b>

Totals	
Intake	Existing
Permitting	\$ 7,500.00
Piping	\$ 29,600.00
Additional Fees	\$ 9,275.00
<b>Total Cost</b>	<b>\$ 46,375.00</b>

Assumptions
<p>Water will be taken from Pinnacle Creek , adjacent to the Town of Pineville. Previous usages of the stream have confirmed the capacity to be adequate.</p> <p>According to the WV DNR, Pinnacle Creek in Wyoming County is not a mussell stream and does not require a survey to be completed during permitting. Permits required would include WV DEP, WV DNR, ACOE, WV SHPO, US FWS, WV DOH and County Floodplain.</p> <p>The piping route is included in the following page of supporting documentation.</p> <p>Additional fees are predicted to be 25% of overall cost. The fees include legal, engineering and accounting needs.</p>



Secondary Intake





Pricing Parameters	
If the GPM needed is Greater than or Equal to 1,000 GPM (12" Pipe)	
If the GPM needed is between 700 GPM to 999 GPM (8" Pipe)	
If the GPM needed is less than 700 GPM (6" Pipe)	

Utility Information		
Existing Capacity	700	GPM
Footage Needed	5,000	LF

Price for First 1,000 LF					
Item	Unit	\$/Unit	Gate Valve (2)	Meter	Cost Per Foot
12" Pipe	LF	\$ 60.00	\$ 4,400.00	\$ 2,450.00	\$ 66.85
8" Pipe	LF	\$ 37.00	\$ 2,530.00	\$ 2,450.00	\$ 41.98
6" Pipe	LF	\$ 34.00	\$ 1,880.00	\$ 2,450.00	\$ 38.33

Additional Footage after 1,000 LF				
Item	Unit	\$/Unit	Gate Valve (1)	Cost Per Foot
12" Pipe	LF	\$ 60.00	\$ 2,200.00	\$ 62.20
8" Pipe	LF	\$ 37.00	\$ 1,265.00	\$ 38.27
6" Pipe	LF	\$ 34.00	\$ 940.00	\$ 34.94

Additional Costs	
Permitting (All)	\$ 7,500.00

Booster Station Cost		
GPM	\$/Gal	Total Cost
400+	\$ 950.00	\$ 665,000.00
100+	\$ 1,798.00	\$ -
60+	\$ 2,750.00	\$ -

Total Cost of Interconnection	
First 1,000 LF	\$ 38,330.00
Additional Footage	\$ 139,760.00
Permitting	\$ 7,500.00
Booster Station	\$ 665,000.00
Additional Fees	\$ 212,647.50
<b>Total</b>	<b>\$ 1,063,238</b>

Assumptions
One gate valve per 1,000 feet of additional water line.
Non-rocky conditions.
Additional Fees predicted to be 25% of overall cost. These include legal, engineering and accounting requirements.
Permits would include WVDEP, WVDNR, ACOE, WVSHPO, USFW, WVDOH and County Floodplain.
The piping route is included in the following page of supporting documentation.
Costs for each item include materials and labor.



## Interconnection Routing





TREATED WATER TANK COST				
Gallons	Tank Dimension	Model Number	Cost	Cost Per Gallon
105,000	25.17'dia. x 28.43' sidewall height	AQUASTORE tank Model 25 28 - SSWT	\$ 155,000	\$ 1.48
209,000	30.77'dia. x 37.59' sidewall height	AQUASTORE tank Model 31 38 - SSWT	\$ 225,000	\$ 1.08
297,000	39.16'dia. x 33.01' sidewall height	AQUASTORE tank Model 39 33 - SSWT	\$ 285,000	\$ 0.96
438,000	47.55'dia. x 33.01' sidewall height	AQUASTORE tank Model 48 33 - SSWT	\$ 345,000	\$ 0.79
491,000	50.35'dia. x 33.01' sidewall height	AQUASTORE tank Model 50 33 - SSWT	\$ 365,000	\$ 0.74
607,000	55.95'dia. x 33.01' sidewall height	AQUASTORE tank Model 56 33 - SSWT	\$ 425,000	\$ 0.70
691,000	64.34'dia. x 28.43' sidewall height	AQUASTORE tank Model 64 28 - SSWT	\$ 470,000	\$ 0.68
816,000	69.93'dia. x 28.43' sidewall height	AQUASTORE tank Model 70 28 - SSWT	\$ 510,000	\$ 0.63
948,000	69.93'dia. x 33.01' sidewall height	AQUASTORE tank Model 70 33 - SSWT	\$ 555,000	\$ 0.59
1,025,000	72.73'dia. x 33.01' sidewall height	AQUASTORE tank Model 73 33 - SSWT	\$ 595,000	\$ 0.58
1,260,000	72.73'dia. x 33.01' sidewall height	AQUASTORE tank Model 73 33 - SSWT	\$ 695,000	\$ 0.55
1,453,000	97.91'dia. x 28.43' sidewall height	AQUASTORE tank Model 98 28- SSWT	\$ 790,000	\$ 0.54
1,601,000	97.91'dia. x 28.43' sidewall height	AQUASTORE tank Model 98 28- SSWT	\$ 870,000	\$ 0.54
1,789,000	103.5'dia. x 28.43' sidewall height	AQUASTORE tank Model 104 28- SSWT	\$ 945,000	\$ 0.53
2,026,000	120.29'dia. x 23.84' sidewall height	AQUASTORE tank Model 120 24- SSWT	\$ 1,052,000	\$ 0.52

COSTS OF ADDITIONAL ITEMS AND ASSUMPTIONS	
Access Road and Site Preparation	\$ 75,000
Yard Piping and Vault	13%
Bonds/Permits	\$ 20,000
Fencings	\$ 35,000
Engineering/Accounting/Legal Fees	25%
Level-Sensing and Measuring Equipment	\$ 10,000
Rock Excavation of Foundation (if encountered)	5%
<b>ASSUMPTIONS:</b> Cost are based on a standpipe glass lined tank. Price include access roads and site preparation (assuming land would need to be purchased for the tank site), telemetry, excavation in rock (% of Tank Cost), valve vault and piping (13% of tank Cost), fencing (Lump Sum). Does not include additional waterline from site to water system. Fees for engineering, legal and accounting services will be 25 percent of the overall project cost.	

TOTAL COST (INCLUDING ADDITIONAL ITEMS) OF TREATED WATER STORAGE				
Gallons	Tank Dimension	Model Number	Cost	Cost Per Gallon
105,000	25.17'dia. x 28.43' sidewall height	AQUASTORE tank Model 25 28 - SSWT	\$ 403,625	\$ 3.84
209,000	30.77'dia. x 37.59' sidewall height	AQUASTORE tank Model 31 38 - SSWT	\$ 506,875	\$ 2.43
297,000	39.16'dia. x 33.01' sidewall height	AQUASTORE tank Model 39 33 - SSWT	\$ 595,375	\$ 2.00
438,000	47.55'dia. x 33.01' sidewall height	AQUASTORE tank Model 48 33 - SSWT	\$ 683,875	\$ 1.56
491,000	50.35'dia. x 33.01' sidewall height	AQUASTORE tank Model 50 33 - SSWT	\$ 713,375	\$ 1.45
607,000	55.95'dia. x 33.01' sidewall height	AQUASTORE tank Model 56 33 - SSWT	\$ 801,875	\$ 1.32
691,000	64.34'dia. x 28.43' sidewall height	AQUASTORE tank Model 64 28 - SSWT	\$ 868,250	\$ 1.26
816,000	69.93'dia. x 28.43' sidewall height	AQUASTORE tank Model 70 28 - SSWT	\$ 927,250	\$ 1.14
948,000	69.93'dia. x 33.01' sidewall height	AQUASTORE tank Model 70 33 - SSWT	\$ 993,625	\$ 1.05
1,025,000	72.73'dia. x 33.01' sidewall height	AQUASTORE tank Model 73 33 - SSWT	\$ 1,052,625	\$ 1.03
1,260,000	72.73'dia. x 33.01' sidewall height	AQUASTORE tank Model 73 33 - SSWT	\$ 1,200,125	\$ 0.95
1,453,000	97.91'dia. x 28.43' sidewall height	AQUASTORE tank Model 98 28- SSWT	\$ 1,340,250	\$ 0.92
1,601,000	97.91'dia. x 28.43' sidewall height	AQUASTORE tank Model 98 28- SSWT	\$ 1,458,250	\$ 0.91
1,789,000	103.5'dia. x 28.43' sidewall height	AQUASTORE tank Model 104 28- SSWT	\$ 1,568,875	\$ 0.88
2,026,000	120.29'dia. x 23.84' sidewall height	AQUASTORE tank Model 120 24- SSWT	\$ 1,726,700	\$ 0.85



RAW WATER TANK COST				
Gallons	Tank Dimension	Model Number	Cost	Cost Per Gallon
105,000	25.17'dia. x 28.43' sidewall height	AQUASTORE tank Model 25 28 - SSWT	\$ 155,000	\$ 1.48
209,000	30.77'dia. x 37.59' sidewall height	AQUASTORE tank Model 31 38 - SSWT	\$ 225,000	\$ 1.08
297,000	39.16'dia. x 33.01' sidewall height	AQUASTORE tank Model 39 33 - SSWT	\$ 285,000	\$ 0.96
438,000	47.55'dia. x 33.01' sidewall height	AQUASTORE tank Model 48 33 - SSWT	\$ 345,000	\$ 0.79
491,000	50.35'dia. x 33.01' sidewall height	AQUASTORE tank Model 50 33 - SSWT	\$ 365,000	\$ 0.74
607,000	55.95'dia. x 33.01' sidewall height	AQUASTORE tank Model 56 33 - SSWT	\$ 425,000	\$ 0.70
691,000	64.34'dia. x 28.43' sidewall height	AQUASTORE tank Model 64 28 - SSWT	\$ 470,000	\$ 0.68
816,000	69.93'dia. x 28.43' sidewall height	AQUASTORE tank Model 70 28 - SSWT	\$ 510,000	\$ 0.63
948,000	69.93'dia. x 33.01' sidewall height	AQUASTORE tank Model 70 33 - SSWT	\$ 555,000	\$ 0.59
1,025,000	72.73'dia. x 33.01' sidewall height	AQUASTORE tank Model 73 33 - SSWT	\$ 595,000	\$ 0.58
1,260,000	72.73'dia. x 33.01' sidewall height	AQUASTORE tank Model 73 33 - SSWT	\$ 695,000	\$ 0.55
1,453,000	97.91'dia. x 28.43' sidewall height	AQUASTORE tank Model 98 28- SSWT	\$ 790,000	\$ 0.54
1,601,000	97.91'dia. x 28.43' sidewall height	AQUASTORE tank Model 98 28- SSWT	\$ 870,000	\$ 0.54
1,789,000	103.5'dia. x 28.43' sidewall height	AQUASTORE tank Model 104 28- SSWT	\$ 945,000	\$ 0.53
2,026,000	120.29'dia. x 23.84' sidewall height	AQUASTORE tank Model 120 24- SSWT	\$ 1,052,000	\$ 0.52

COSTS OF ADDITIONAL ITEMS AND ASSUMPTIONS	
Access Road and Site Preparation	\$ 75,000
Yard Piping and Vault	13%
Bonds/Permits	\$ 20,000
Fencings	\$ 35,000
Engineering/Accounting/Legal Fees	25%
Level-Sensing and Measuring Equipment	\$ 10,000
Rock Excavation of Foundation (if encountered)	5%
<b>ASSUMPTIONS:</b> Cost are based on a standpipe glass lined tank. Price include access roads and site preparation (assuming land would need to be purchased for the tank site), telemetry, excavation in rock (% of Tank Cost), valve vault and piping (13% of tank Cost), fencing (Lump Sum). Does not include additional waterline from site to water system. Fees for engineering, legal and accounting services will be 25 percent of the overall project cost.	

TOTAL COST (INCLUDING ADDITIONAL ITEMS) OF RAW WATER STORAGE				
Gallons	Tank Dimension	Model Number	Cost	Cost Per Gallon
105,000	25.17'dia. x 28.43' sidewall height	AQUASTORE tank Model 25 28 - SSWT	\$ 403,625	\$ 3.84
209,000	30.77'dia. x 37.59' sidewall height	AQUASTORE tank Model 31 38 - SSWT	\$ 506,875	\$ 2.43
297,000	39.16'dia. x 33.01' sidewall height	AQUASTORE tank Model 39 33 - SSWT	\$ 595,375	\$ 2.00
438,000	47.55'dia. x 33.01' sidewall height	AQUASTORE tank Model 48 33 - SSWT	\$ 683,875	\$ 1.56
491,000	50.35'dia. x 33.01' sidewall height	AQUASTORE tank Model 50 33 - SSWT	\$ 713,375	\$ 1.45
607,000	55.95'dia. x 33.01' sidewall height	AQUASTORE tank Model 56 33 - SSWT	\$ 801,875	\$ 1.32
691,000	64.34'dia. x 28.43' sidewall height	AQUASTORE tank Model 64 28 - SSWT	\$ 868,250	\$ 1.26
816,000	69.93'dia. x 28.43' sidewall height	AQUASTORE tank Model 70 28 - SSWT	\$ 927,250	\$ 1.14
948,000	69.93'dia. x 33.01' sidewall height	AQUASTORE tank Model 70 33 - SSWT	\$ 993,625	\$ 1.05
1,025,000	72.73'dia. x 33.01' sidewall height	AQUASTORE tank Model 73 33 - SSWT	\$ 1,052,625	\$ 1.03
1,260,000	72.73'dia. x 33.01' sidewall height	AQUASTORE tank Model 73 33 - SSWT	\$ 1,200,125	\$ 0.95
1,453,000	97.91'dia. x 28.43' sidewall height	AQUASTORE tank Model 98 28- SSWT	\$ 1,340,250	\$ 0.92
1,601,000	97.91'dia. x 28.43' sidewall height	AQUASTORE tank Model 98 28- SSWT	\$ 1,458,250	\$ 0.91
1,789,000	103.5'dia. x 28.43' sidewall height	AQUASTORE tank Model 104 28- SSWT	\$ 1,568,875	\$ 0.88
2,026,000	120.29'dia. x 23.84' sidewall height	AQUASTORE tank Model 120 24- SSWT	\$ 1,726,700	\$ 0.85

PWS_ID	SYSTEMNAME	County	GEN_EXIST	GEN_NUM	GEN_FACILITY	GEN_LOC	GEN_KVA	GEN_KW	AMP_LOAD	AMP_LOAD_BASIS	VOLTS	PHASES	FUEL_TYPE	FUEL_TANK	F_TANK_SIZE	GEN_CON_PNT	GEN_CABLE_SIZE	GEN_CABLE_NOTE	GEN_CABLE_LENGTH	GEN_C_LEN_NOTE	OTHER_INFO	DISTRICT
WV3305517	PINEVILLE MUNICIPAL	WYOMING	NO	1	TREATMENT PLANT	TREATMENT PLANT AT PINEVILLE	150	120	280	MOTOR LOADING: 1 - 75; 1 - 20; AND 2 - 5 HP MOTORS	120 / 240	3 PHASE DELTA	DIESEL	ATTACHED	150 GALLON	LOAD SIDE OF THE 600 AMP MAIN BREAKER	3 / 0 COPPER	TYPE W PORTABLE POWER CABLE	75 FEET	75 FEET TOTAL LENGTH OF CABLE ( 4 CONDUCTOR WITH GROUND )	(A) WILL NEED ELECTRICIAN (B) NO TRANSFER SWITCH (C) 80% POWER FACTOR USED IN THE CALCULATIONS.	DIST1
WV3305517	PINEVILLE MUNICIPAL	WYOMING	NO	2	BOOSTER PUMP STATION	LUCILLE COOK BOOSTER	75	60	65	1 - 50 HP MOTOR AT 480 VOLTS	277 / 480	3 PHASE WYE	DIESEL	ATTACHED	150 GALLON	LOAD SIDE OF THE 400 AMP MAIN BREAKER	# 4 COPPER	TYPE W PORTABLE POWER CABLE	50 FEET	50 FEET TOTAL LENGTH OF CABLE ( 4 CONDUCTOR WITH GROUND )	(A) WILL NEED AN ELECTRICIAN (B) UTILITY TRANSFORMERS: 75 KVA (C) 80% POWER FACTOR USED IN THE CALCULATIONS (D) NO EXISTING TRANSFER SWITCH	DIST1
WV3305517	PINEVILLE MUNICIPAL	WYOMING	NO	3	BOOSTER PUMP STATION	ROLLING HILLS BOOSTER	30	24	42	BASED ON 15 HP LOADING.	120 / 240	3 PHASE DELTA	GAS	ATTACHED	60 GALLON	LOAD SIDE OF THE MAIN BREAKER	# 6 COPPER	TYPE W, PORTABLE POWER CABLE	50 FEET	TOTAL LENGTH OF CABLE IS 50 FEET ( 4 CONDUCTOR WITH GROUND )	(A) WILL NEED AN ELECTRICIAN (B) 80% POWER FACTOR USED IN CALCULATIONS (C) NO FUEL STORAGE ON SITE AT PRESENT (D) LARGEST MOTOR IS 15 HP (E) NO EXISTING TRANSFER SWITCH	DIST1
WV3305517	PINEVILLE MUNICIPAL	WYOMING	NO	4	BOOSTER PUMP STATION	JACKSON HILL BOOSTER	30	24	54	BASED ON 1 - 20 HP MOTOR LOADING	120 / 240	3 PHASE DELTA	DIESEL	ATTACHED	100 GALLON	LOAD SIDE OF MAIN BREAKER	# 4 COPPER	TYPE W PORTABLE POWER CABLE	50 EACH	50 FEET TOTAL LENGTH OF CABLE ( 4 CONDUCTOR WITH GROUND )	(A) WILL NEED ELECTRICIAN (B) 80% POWER FACTOR USED IN CALCULATIONS. (C) NO TRANSFER SWITCH	DIST1
WV3305517	PINEVILLE MUNICIPAL	WYOMING	NO	5	BOOSTER PUMP STATION	ROUTE 97 BOOSTER	6	5	10	1 - 3HP, 3PHASE, 240 VOLT MOTOR	120 / 240	3 PHASE DELTA	GAS	ATTACHED	4 GALLON	LOAD SIDE OF MAIN BREAKER	# 10 COPPER	TYPE W, PORTABLE POWER CABLE	30 FEET	TOTAL LENGTH OF CABLE IS 30 FEET ( 4 CONDUCTOR WITH GROUND )	(A) NEED ELECTRICIAN (B) APPEARS UTILITY SERVICE IS AN 'OPEN - DELTA' CONNECTION	DIST1

## APPENDIX E. SUPPORTING DOCUMENTATION

### Municipal Water Works of Pineville Source Water Protection Team Meeting

Pineville City Hall, 296 Appalachian Highway, Pineville, March 29, 2016, 11 am

Attendees:

- Dean Meadows, Wyoming County 911/OES Director
- Mike Goode, Pineville Assistant Fire Chief
- Tim Ellison, Pineville Mayor
- Roger Snow, Pineville Police Chief
- John Beckman, Tetra Tech

Discussed new source water protection regulations in response to Charleston Water Crisis. 2011 source water protection plan must be updated. Updates required every 3 years.

Mentioned street address for Town Hall for admin office location. Reviewed primary and backup intake locations. Discussed 5 hour time of travel for ZCC and 10 hour time of travel for ZPC.

Reviewed Protection Team Table, added several people to the team who were not able to make the protection team meeting: Fred Cox from the Wyoming County Health Department and Mike Johnson, a Wyoming County Deputy Sheriff. Current email address for Town of Pineville is townofpineville@outlook.com.

CSX and Norfolk Southern railroads run near the intake. Non-coal freight is hauled with increasing frequency on these routes. Increased potential for contamination in case of derailment. Norfolk Southern RR tracks follow the Guyandotte River in the protection watershed.

Many residential areas along the Guyandotte are not served by public sewer. Seneca Coal is taking over the Pinnacle Mining Company. Pinnacle has a good safety program. Alpha Natural Resources mines further up in watershed are of greater concern because Alpha is in bankruptcy. Permit compliance is better at active mines than at shut down mines.

Leave in plant tours as an outreach strategy, even though no tours have been conducted recently. Remove watershed protection signs at intake as a strategy. Signs could invite vandalism. Tim Ellison has met with Upper Guyandotte Watershed Association in the past.

Pineville does not currently have a generator at the water plant. They are applying for a grant to purchase a 150 kW generator, as recommended in the Contingency Plan.

Pineville serves 10 customers in the Ravencloft area. Reviewed Appendix A maps.

Reviewed Appendix C Communication Plan. Dean Meadows will serve as Primary Spokesperson, and Mike Goode will serve as Secondary Spokesperson. Discussed Fire Call mass dialing phone system currently used to alert customers. Calls numbers on billing records. Relatively fast to dial all customers. Town has a website and Facebook page. Wyoming County 911 has Facebook page, which has reached 15,000 to 20,000 people very quickly during certain emergency events. There are links to the Wyoming County Economic Development Authority for people to access.

Discussed radio station used for alerts. Listed area schools and sensitive populations served by Pineville. Wyoming County has a county-wide emergency plan, but not a plan specifically for the water utility.

**Municipal Water Works of Pineville Source Water Protection Public Meeting**

Pineville City Hall, 296 Appalachian Highway, Pineville, April 19, 2016, 6:15 am

**Attendees:**

- Tim Ellison, Mayor
- Dean Meadows, Wyoming County 911/OES Director
- Mike Goode, Pineville Assistant Fire Chief
- Mike Clay, Town of Pineville
- Corbet Justus, Chief Operator
- Brenda Sigmon, Town of Pineville
- Linda G. Phillips, Town of Pineville
- Robert Warner, Town of Pineville
- John Beckman, Tetra Tech

Public meeting was held concurrently with regularly scheduled Town Council meeting. Meeting was open to the public and advertised in the newspaper and at City Hall one week before.

Reviewed source water protection timeline. Discussed Charleston Water Crisis of 2014 and reasons for new source water protection legislation. Discussed update to Pineville's 2011 plan, and incorporation of Thrasher Group's contingency/feasibility study. Reviewed plan table of contents and sections. Noted that past source water protection activities once voluntary have now become mandatory.

Summarized potential significant sources: Railroad and highway close to the Guyandotte River has potential for train derailments or toxic spills. Recently closed mines are a threat because bankrupt facilities are not maintained for environmental compliance like active mines. There are many residences on septic, not served by public sewer, along the Guyandotte. There is potential for poorly treated sewage to reach river in ZCC. Sewer line extensions (not currently planned) in the ZCC could help to protect water quality at intake.

Summarized contingency plan alternatives. Backup intake on Pinnacle Creek is a permanent installation with existing pump. Potential for interconnection with Ravenscliff-McGraws-Saulsville PSD.

Discussed 30 minute public notification requirement. Mr. Goode asked how many minutes do permitted industries have to report a spill to the state authorities? Original spill notification time delay should not count against Pineville 30 minute notification time to water customers.

Mayor Ellison signed protection plan signature page. Tetra Tech will assemble plan final document and submit to DHHR electronically.